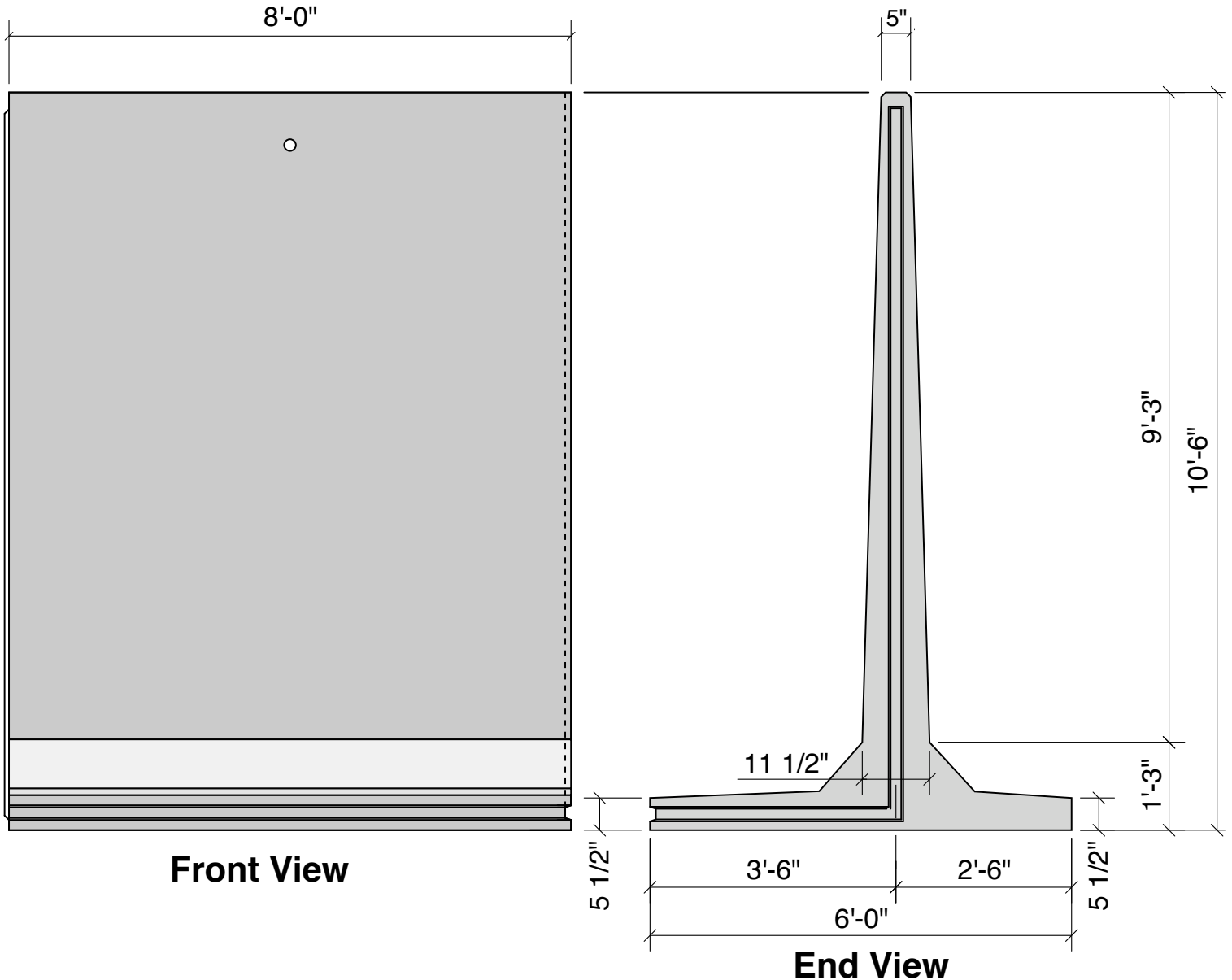
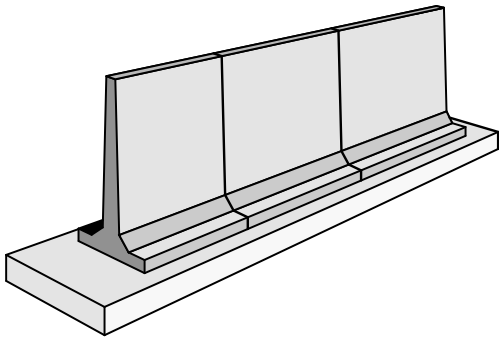


10'-6" BUNKER SILO TEE

SOLID CONSTRUCTION FOR USE IN
GRAIN STORAGE, SILAGE BUNKERS,
LANDSCAPE & RECYCLE BINS



10'-6" "T" Wall Section x 8'-0"

CAST FLAT FOR A SMOOTH FINISH ON BOTH SIDES

Weight - 12,500 Lbs
Concrete - 5,000 PSI

*Crest Precast, Inc.
La Crescent, MN & Barneveld, WI*