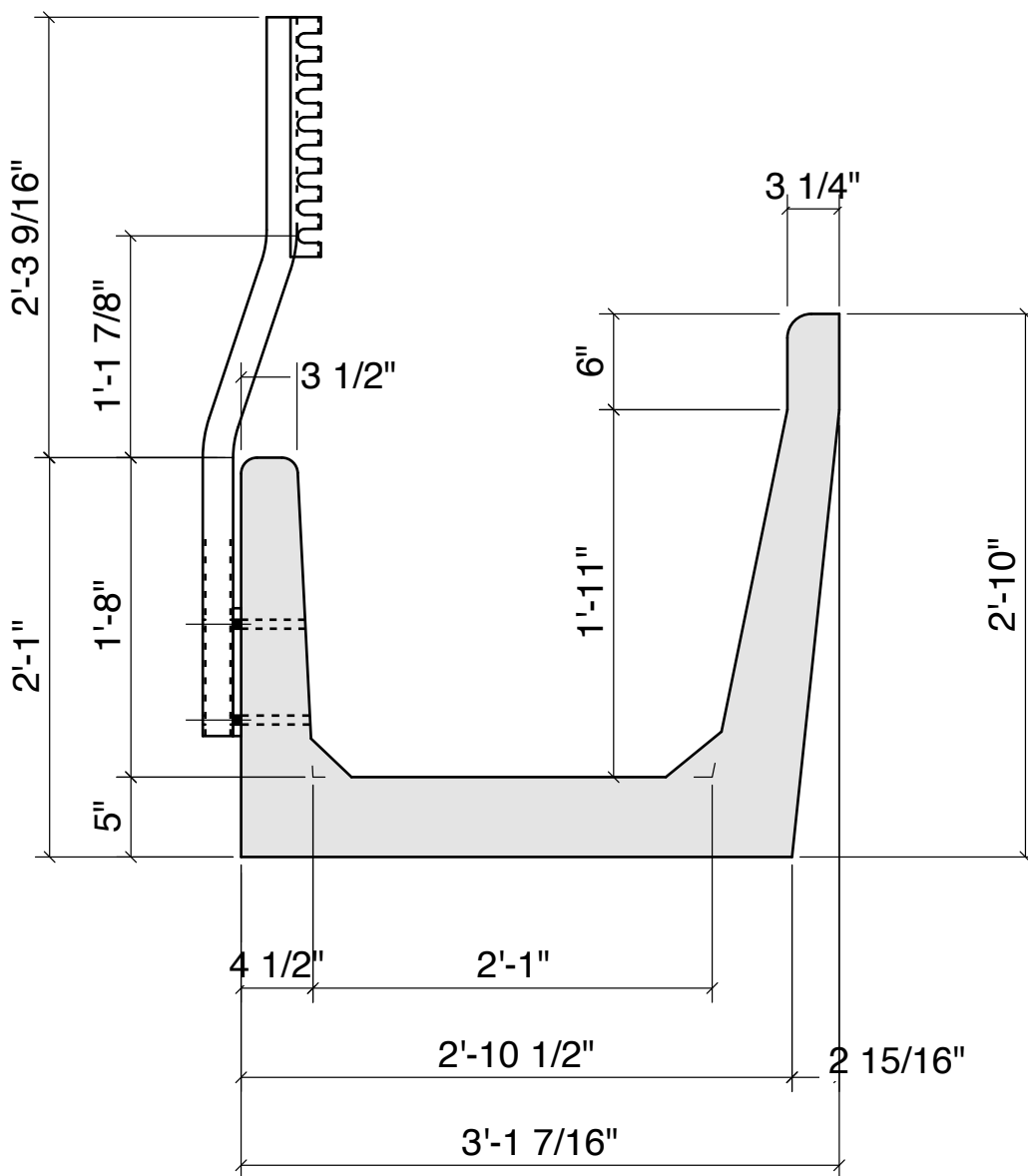


High Capacity Fenceline Bunk



- Advantages:
- Sloped Back Saves Feed
 - Rounded Top Rails
 - Portable - Can Be Moved
 - Rodent Proof - Ends Are Sealed

Standard High Capacity Fenceline Bunk

Weight - 3,600 Lbs Per 8'-0" Length
Concrete - 5,000 PSI

Crest Precast, Inc.
La Crescent, MN & Barneveld, WI