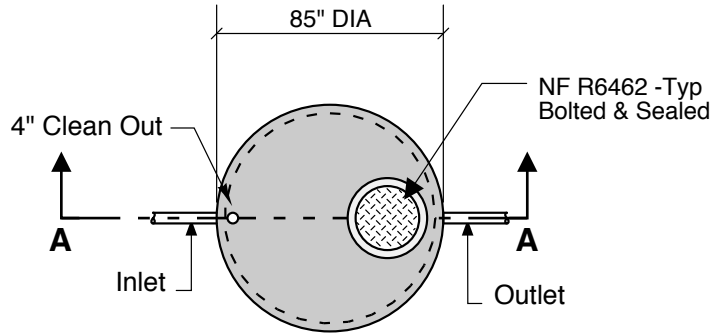
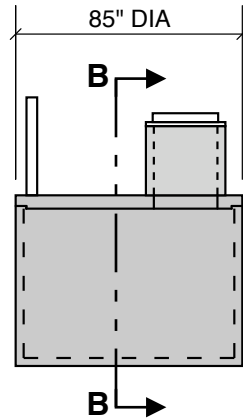


**1000 GALLON
GREASE
47" LL
52" INLET**

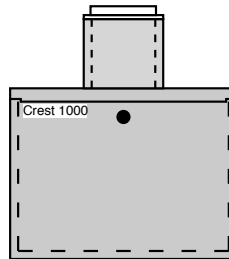
Single Compartment
Round



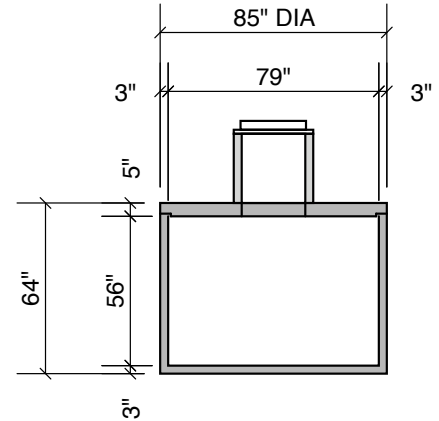
Top View



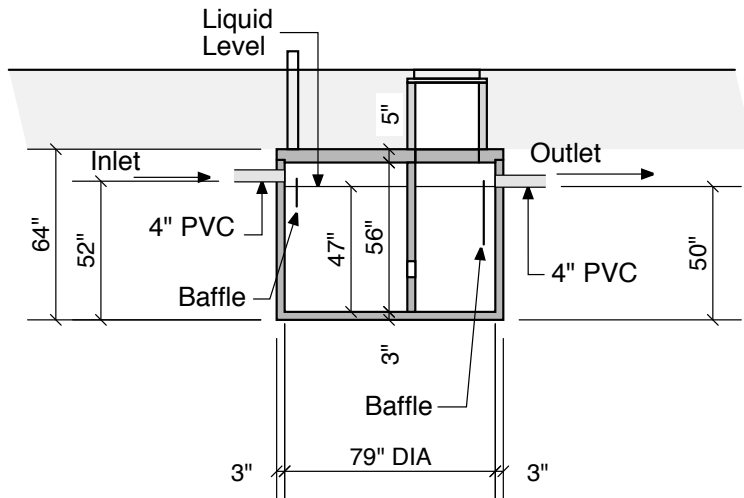
Side View



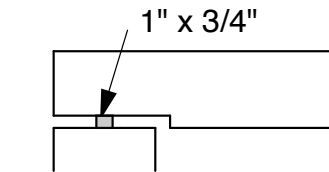
End View



Section B-B



Section A-A



Typical Cover Detail

Notes:
Concrete - 5000 PSI
Joint Sealant - High Grade EZ-Stick
Labels - Warning signs located on all manholes
Installation - See separate installation guide
Baffles Installed
Rubber Gaskets - Press Seal
Tank Designed To ASTM C-1227-90 and ASTM 1613-06

Crest Precast, Inc.
La Crescent, MN & Barneveld, WI
800-658-9045

Scale		Drawn By:	KGT
Date	5-1-08	Revision	
Project:	1000 Gal. Grease Interceptor		
Contractor:	Drawing Number: MODEL 1000-GR		