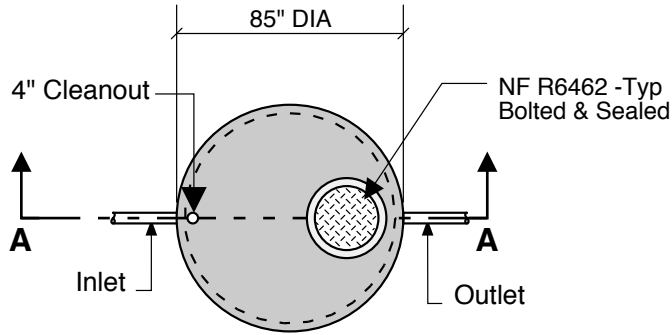
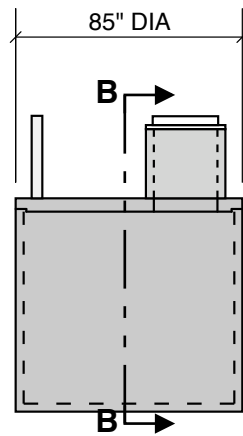


**1250 GALLON  
GREASE  
59" LL  
64" INLET**

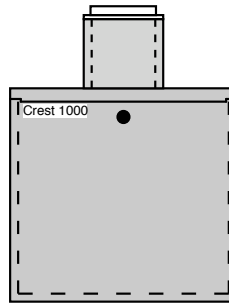
Single Compartment  
Round



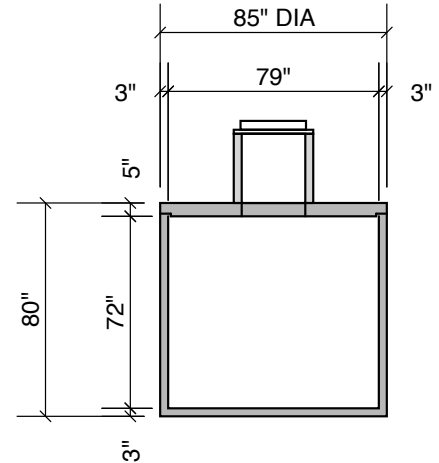
**Top View**



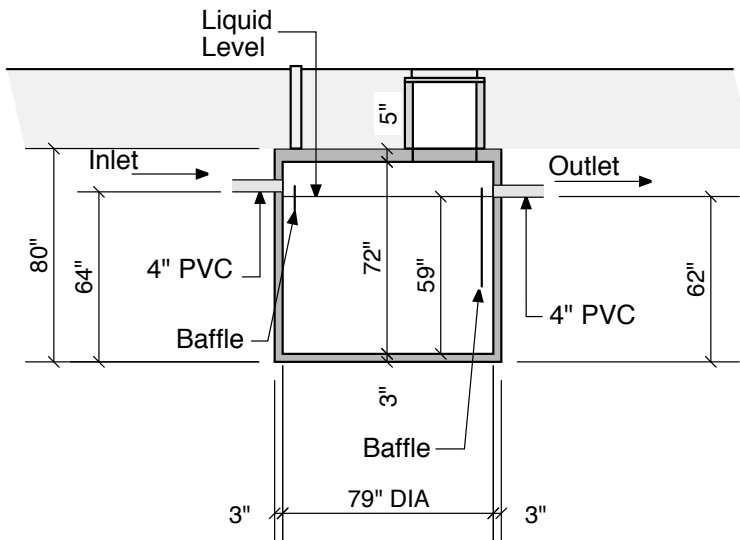
**Side View**



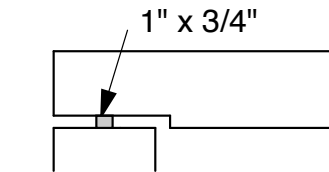
**End View**



**Section B-B**



**Section A-A**



**Typical Cover  
Detail**

Notes:  
 Concrete - 5000 PSI  
 Joint Sealant - High Grade EZ-Stick  
 Labels - Warning signs located on all manholes  
 Installation - See separate installation guide  
 Baffles Installed  
 Rubber Gaskets - Press Seal  
 Tank Designed To ASTM C-1227-90 and ASTM 1613-06

**Crest Precast, Inc.**  
**La Crescent, MN & Barneveld, WI**  
 800-658-9045

Scale		Drawn By:	KGT
Date	5-1-08	Revision	
Project:	1250 Gal. Grease Interceptor		
Contractor:	Drawing Number: <b>MODEL 1250-GR</b>		