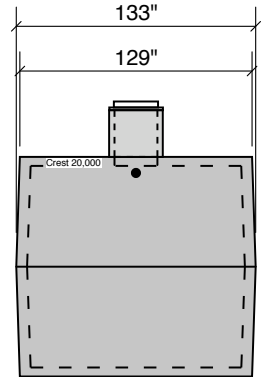
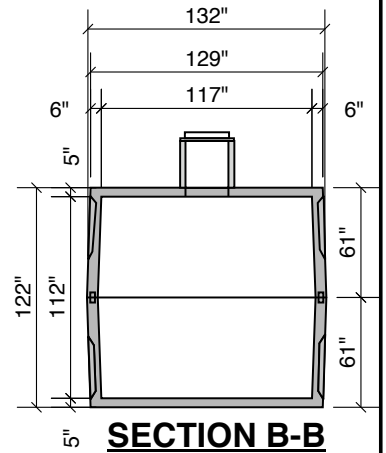


**20000 GALLON  
GREASE  
90" LL  
97" INLET**

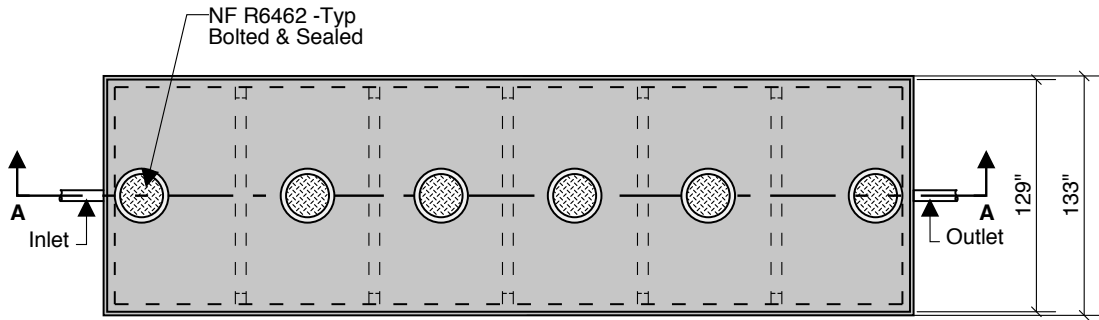
Single Compartment



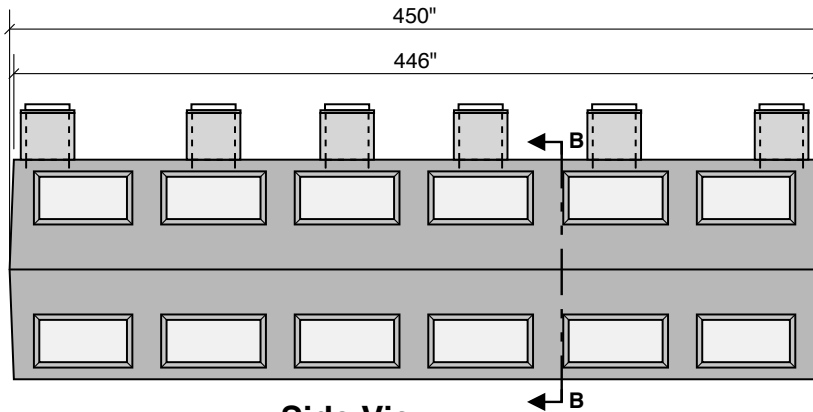
**End View**



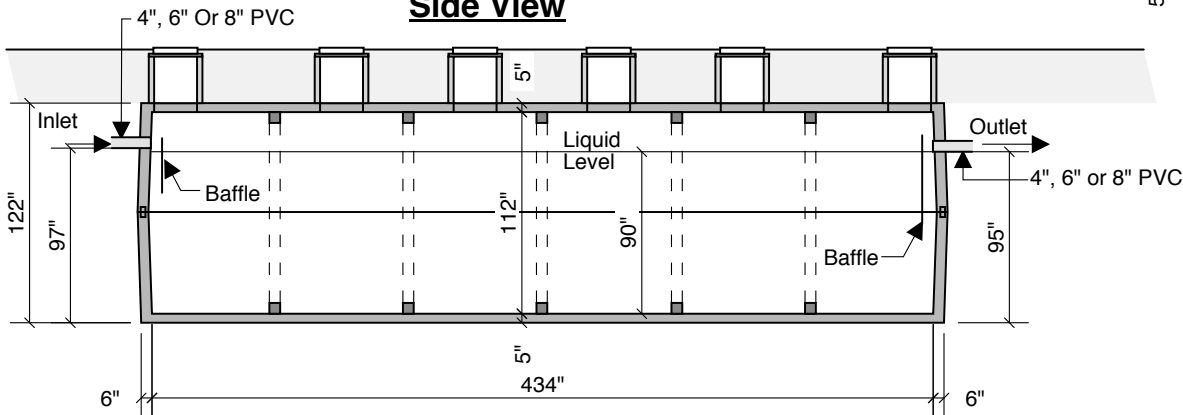
**SECTION B-B**



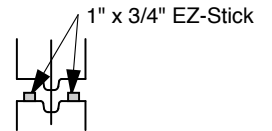
**Top View**



**Side View**



**Section A-A**



**Typical Tongue & Groove Joint**

- Notes:  
 Concrete - 5000 PSI  
 Joint Sealant - High Grade EZ-Stick  
 Labels - Warning signs located on all manholes  
 Installation - See separate installation guide  
 Baffles Installed  
 Rubber Gaskets - Press Seal  
 Tank Designed To ASTM C-1227-90 and ASTM 1613-06

**Crest Precast, Inc.**  
**La Crescent, MN & Barneveld, WI**  
 800-658-9045

Scale		Drawn By:	KGT
Date:	5-1-08	Revision	
Project:		<b>20,000 Gal. Grease Interceptor</b>	
Contractor:		Drawing Number <b>MODEL 20000-G</b>	