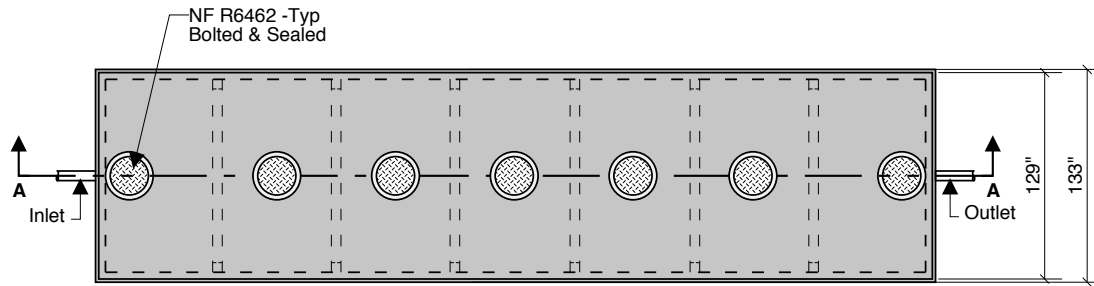
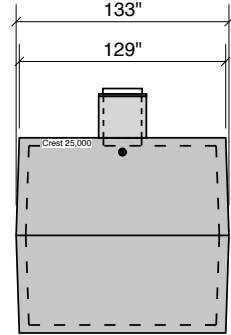


**25000 GALLON
GREASE
97" LL
104" INLET**

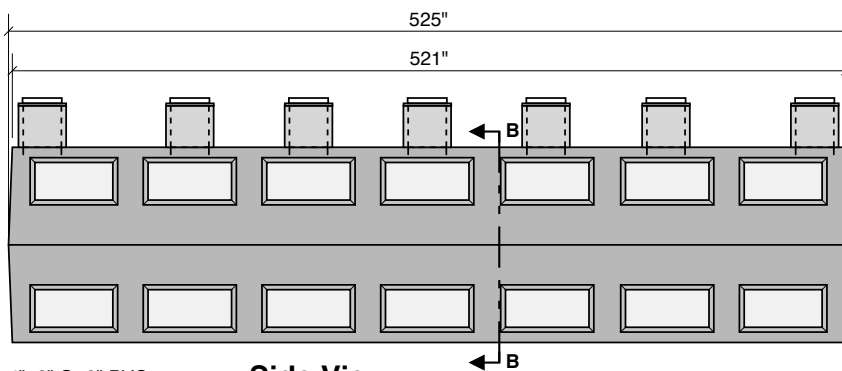
2 Compartment



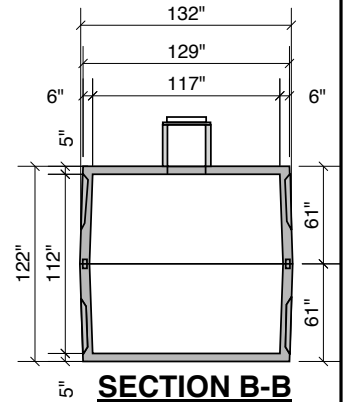
Top View



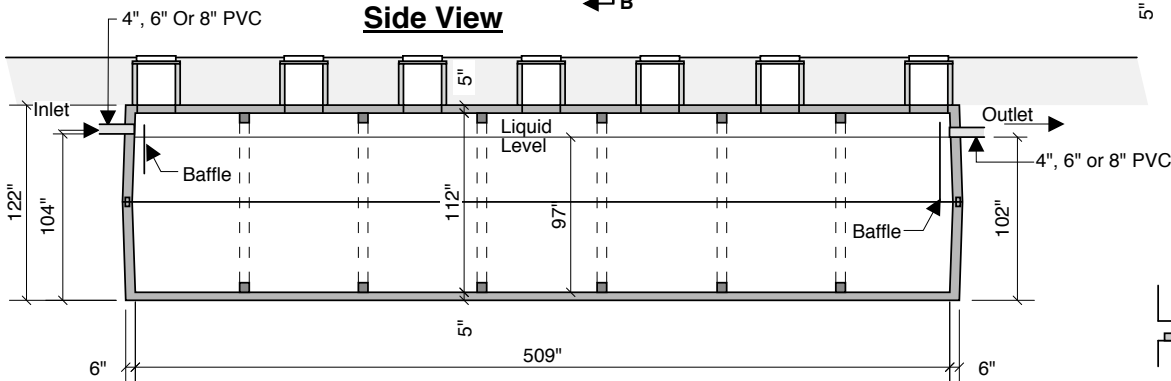
End View



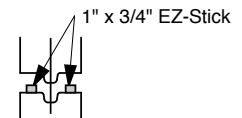
Side View



SECTION B-B



Section A-A



Typical Tongue & Groove Joint

- Notes:
- Concrete - 5000 PSI
 - Joint Sealant - High Grade EZ-Stick
 - Labels - Warning signs located on all manholes
 - Installation - See separate installation guide
 - Baffles Installed
 - Rubber Gaskets - Press Seal
 - Tank Designed To ASTM C-1227-90 and ASTM 1613-06

Crest Precast, Inc.		La Crescent, MN & Barneveld, WI	
800-658-9045			
Scale		Drawn By:	KGT
Date	5-1-08	Revision	
Project:		25,000 Gal. Grease Interceptor	
Contractor:		Drawing Number	MODEL 25000-G