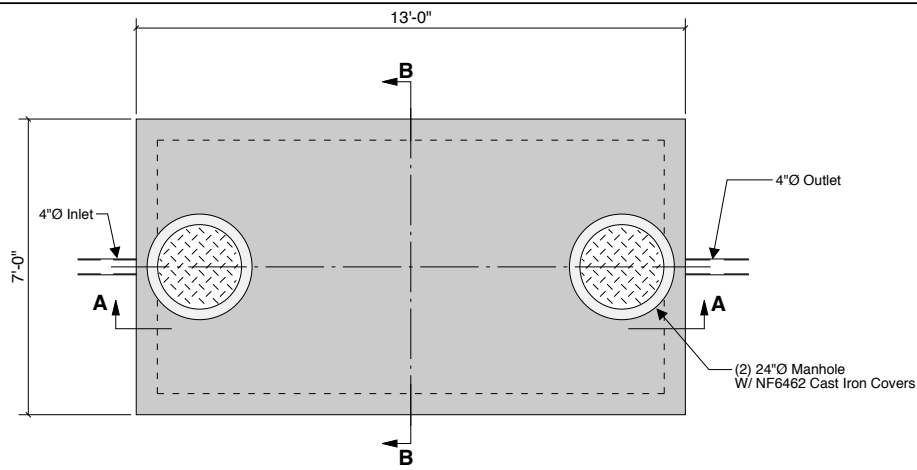
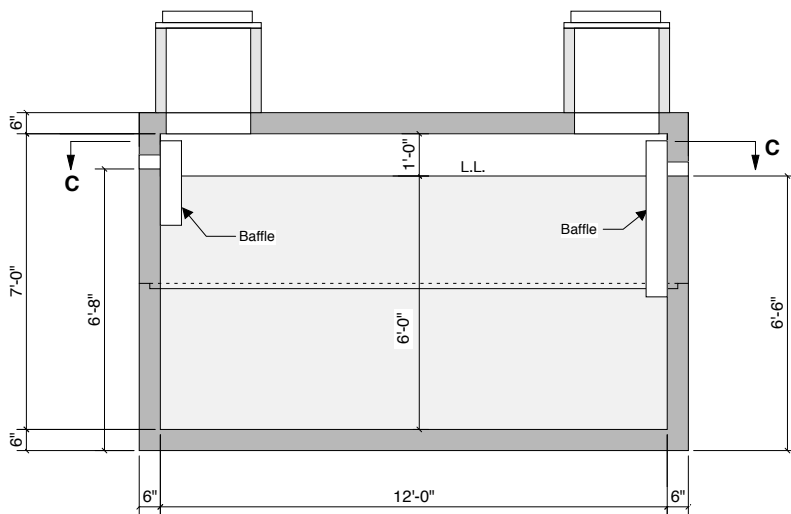


**3200 GALLON
GREASE
72" LL
80" INLET**

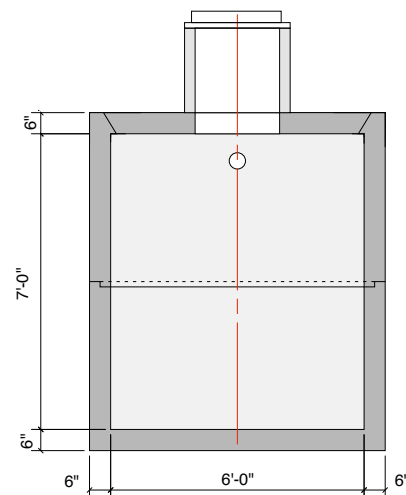
GPI - 44.83 Gal/In.



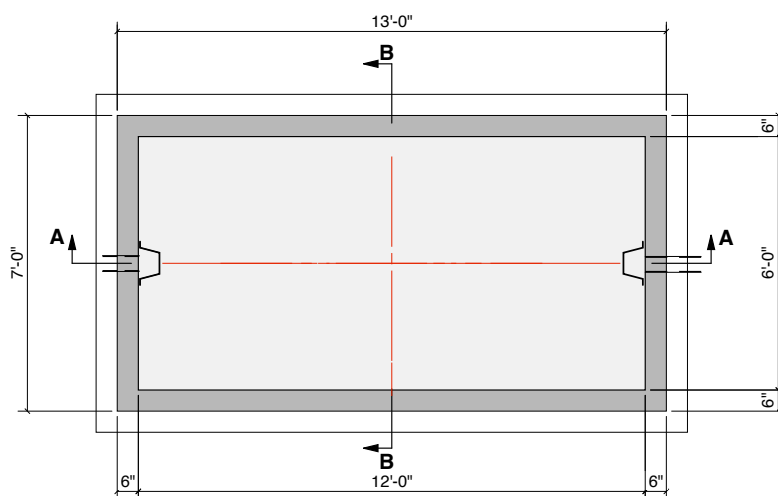
Plan View - Top Panel



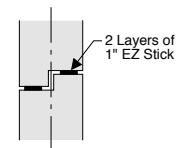
Section A-A



Section B-B



**Section C-C
Sectional Plan**



Typical Joint

Notes:
Concrete - 5000 PSI
Joint Sealant - High Grade EZ-Stick
Labels - Warning signs located on all manholes
Installation - See separate installation guide
Baffles Installed
Rubber Gaskets - Press Seal
Tank Designed To ASTM C-1227-90 and ASTM 1613-06

Crest Precast, Inc.		
La Crescent, MN & Barneveld, WI		
800-658-9045		
Scale	Drawn By: KGT	Revision
Date: 5-1-08		
Project: 3200 Gal. Grease Interceptor		
Contractor:		Drawing Number: MODEL 3200-D