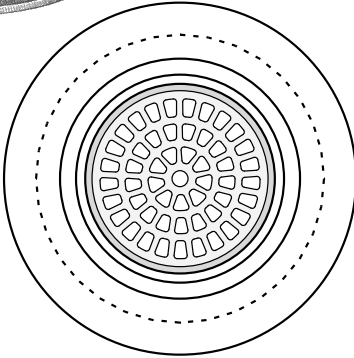
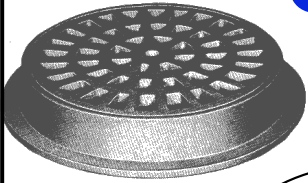
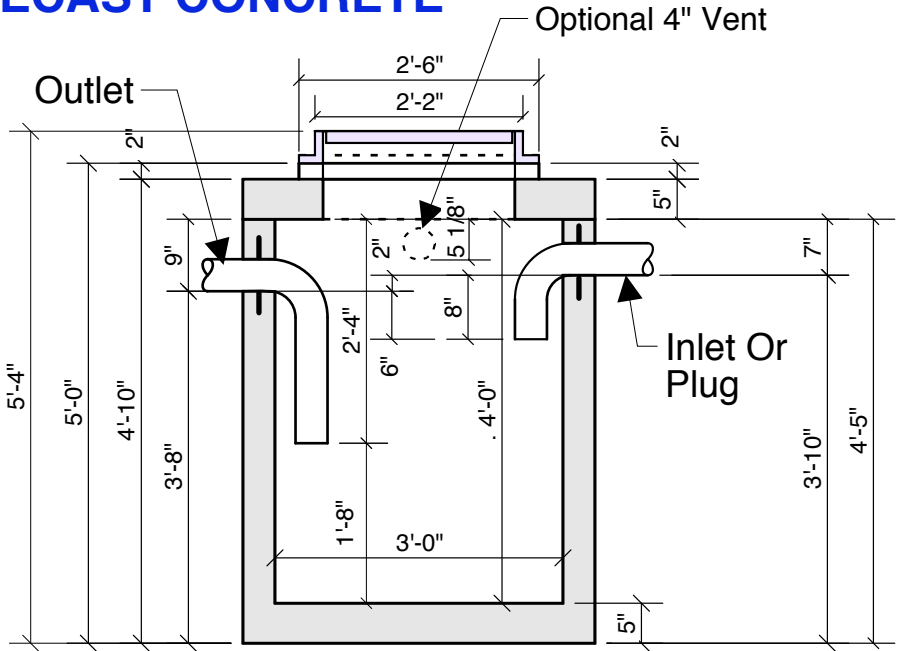


36" Catch Basin

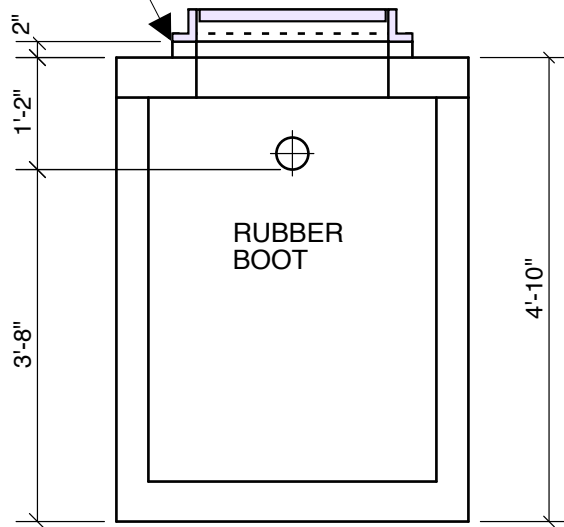
PRECAST CONCRETE



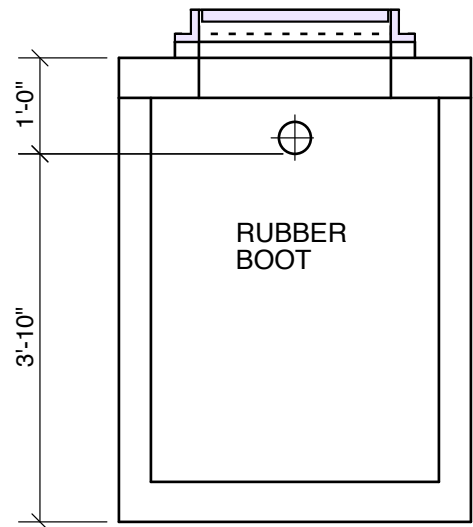
TOP VIEW
Standard Frame &
Grate Is R2510



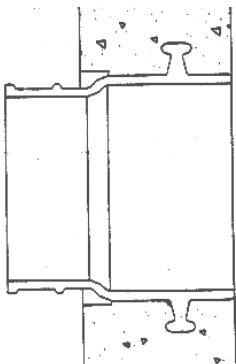
Optional Grade Ring
(2", 4", 6")



Outlet View



Inlet View



GASKET READY
FOR PIPE INSTALLATION

Concrete: 4500 psi
Gasket: Rubber Boot Outlet
Casting: NF R-2510 Ring With Open Grate
Joint Sealant: Ez Stick Mastic
Weight: 3000 LBS.

Crest Precast, Inc.
La Crescent, MN & Barneveld, WI
800-658-9045

Scale		Drawn By:	KGT
Date		Revision	
Project:	36" Catch Basin		
Contractor:	Drawing Number	MODEL 36 CB	