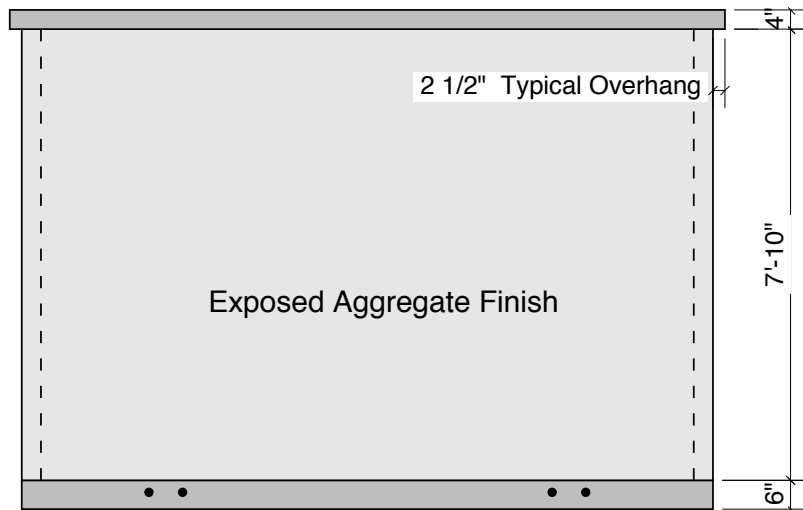
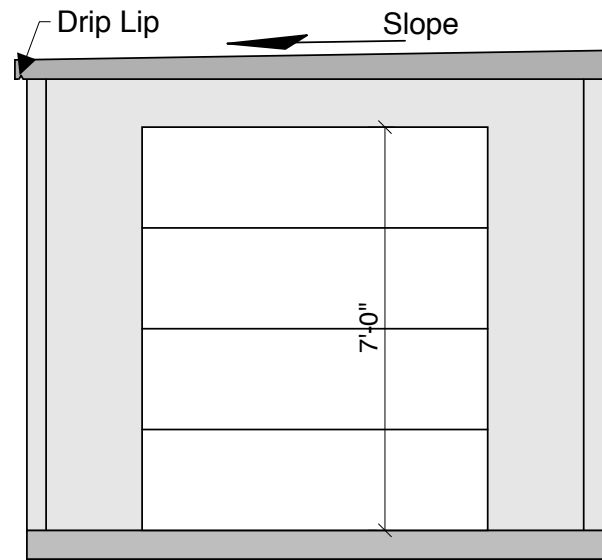


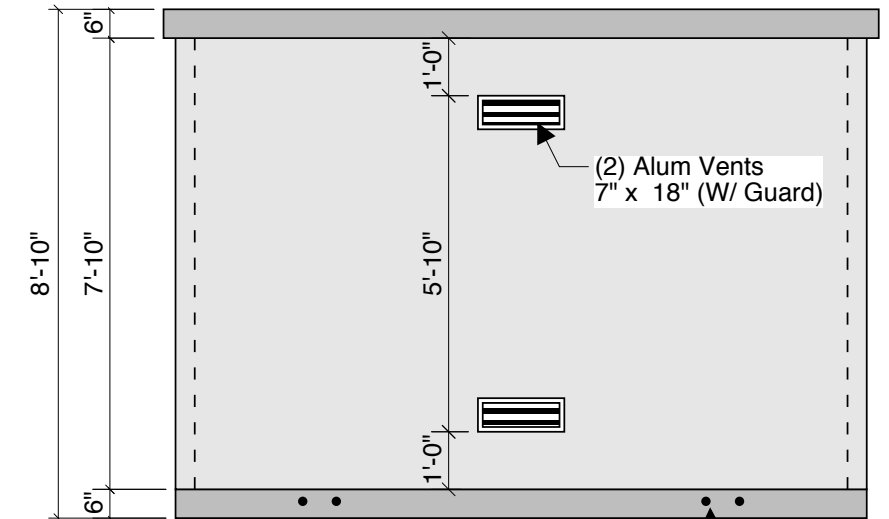
Side #4



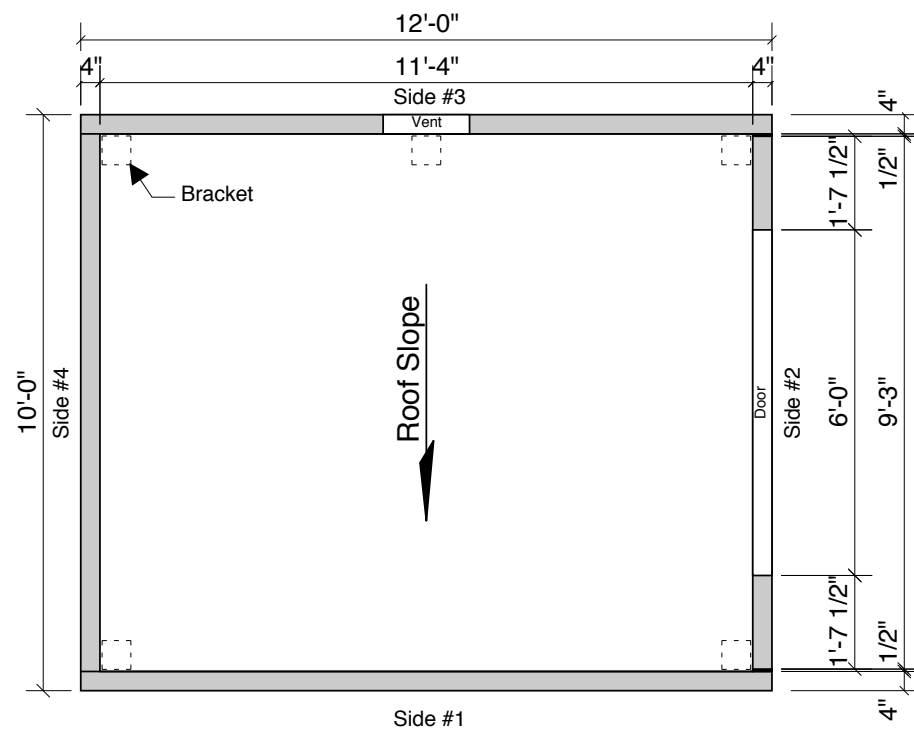
Side #1



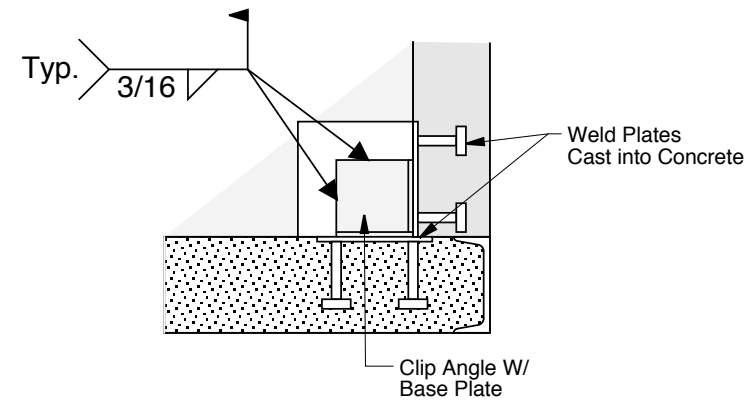
Side #2



Side #3



Floorplan



Typ. Weld Plate Detail

Specifications:

- Exterior Dimensions: 10' x 12' x 8'-10"
- Concrete: Steel Reinforced 5,000 PSI
- Steel: Grade 60 Reinforcing Steel
- Design equivalent to post tension or prestress
- Finishes:
 - Inside - Smooth Concrete Surface Painted (Color By Owner)
 - Exterior - Exposed Aggregate (Color By Owner)
 - Sealed with Graffiti Proof Sealer
- Doors: 6'-0" x 7'-0" By North Central (See Page 3 Of Door Submittal)
- 20 Gauge Metal Door W/ 2" Insulation - Color White
- Roof Load: 60 PSF LL
- Floor Live Load: 100 PSF
- Wind Loading: 120 MPH
- Roof is pitched 2" front to back with a 2 1/2" overhang all around
- Building has two vents for ventilation constructed of 12.5 gauge Aluminum
- Panels are securely fastened together with bolts and steel clips or Welded Connections
- Footing / Stone Base to be minimum 6" thick x 12'-0" x 14'-0" or alternate surface is Concrete Or Asphalt.

Warranty:

- 5 year weatherproof and 10 year structural

Precast Concrete Storage Sheds @ Washburn High School

Crest Precast, Inc.
La Crescent, MN & Barneveld, WI
 800-658-9045

Scale		Drawn By:	KGT
Date	6-14-06	Revision	7-11-06
Project:			
10' x 12' Storage Building @ Minneapolis Schools			
Contractor:			Drawing Number
			MFG1