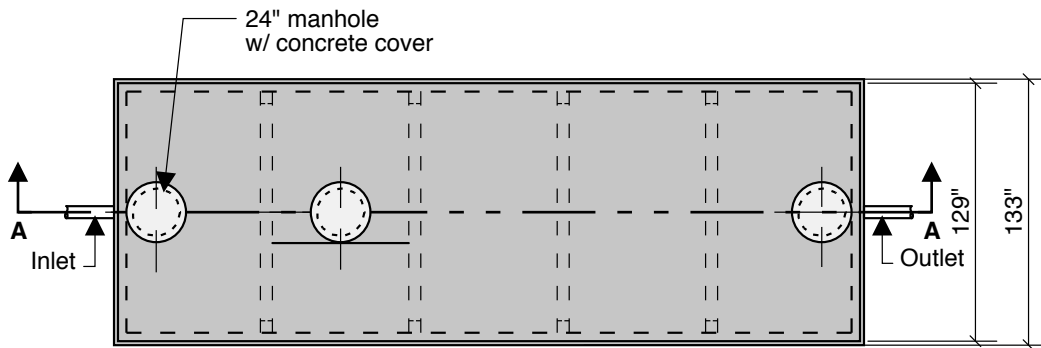
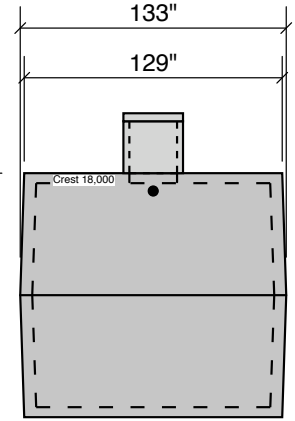


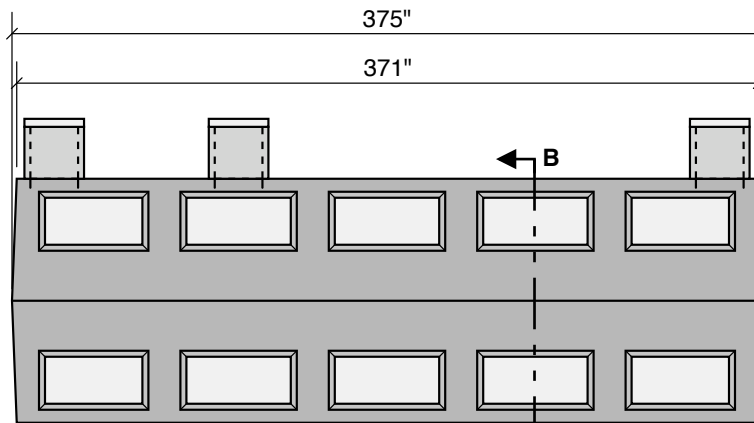
**18000 GALLON
95" LL
102" INLET**



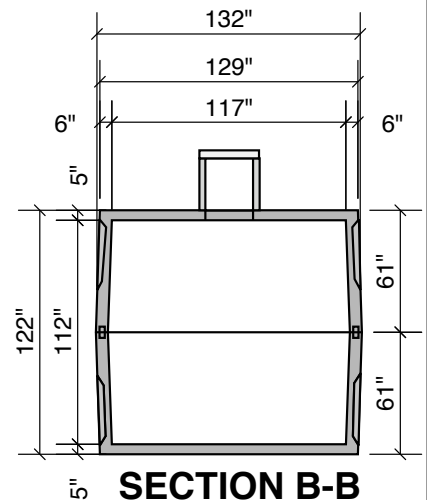
Top View



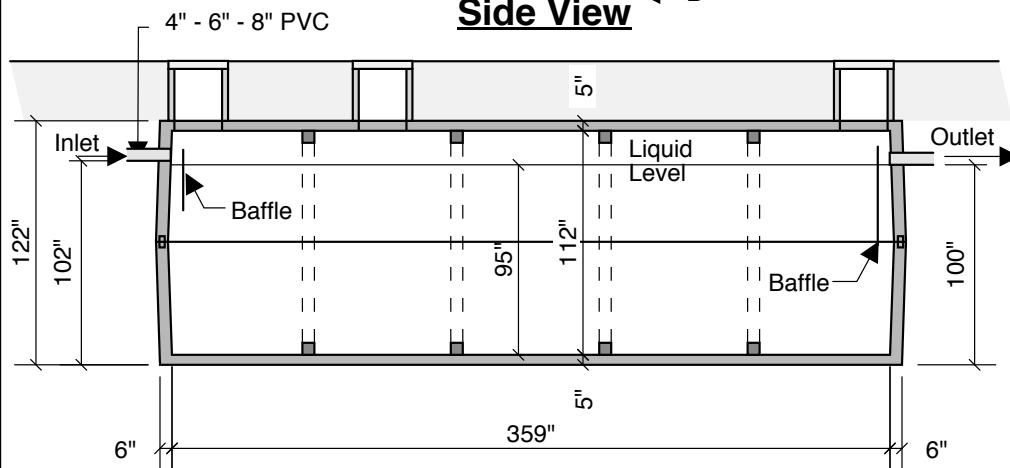
End View



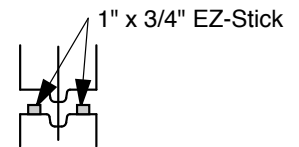
Side View



SECTION B-B



Section A-A



Typical Tongue & Groove Joint

- Notes:**
 Concrete - 5000 PSI
 Joint Sealant - High Grade EZ-Stick
 Labels - Warning signs located on all manholes
 Installation - See separate installation guide
 Baffles Installed
 Rubber Gaskets - Press Seal

Septic - Pump - Holding - Recirculation Or Grease Tank

Crest Precast, Inc.		La Crescent, MN & Barneveld, WI	
800-658-9045		800-658-9045	
Scale		Drawn By:	KGT
Date		Revision	
Project: SEPTIC TANK 18,000 GALLON		Drawing Number	
Contractor:		MODEL 18000	