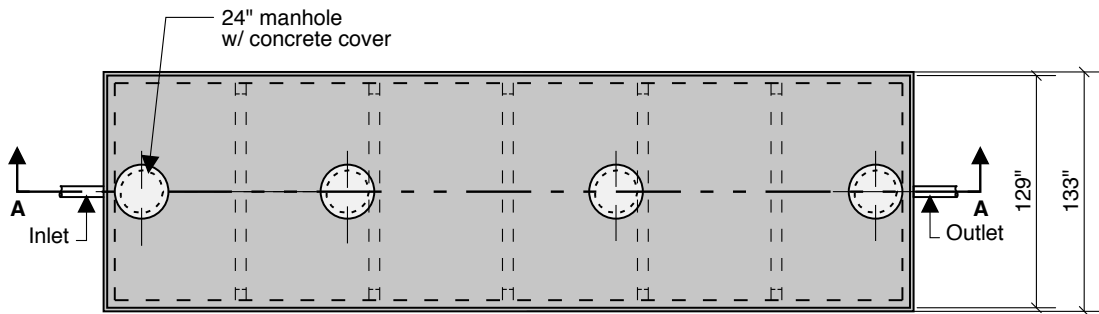
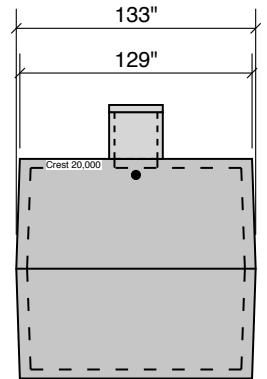


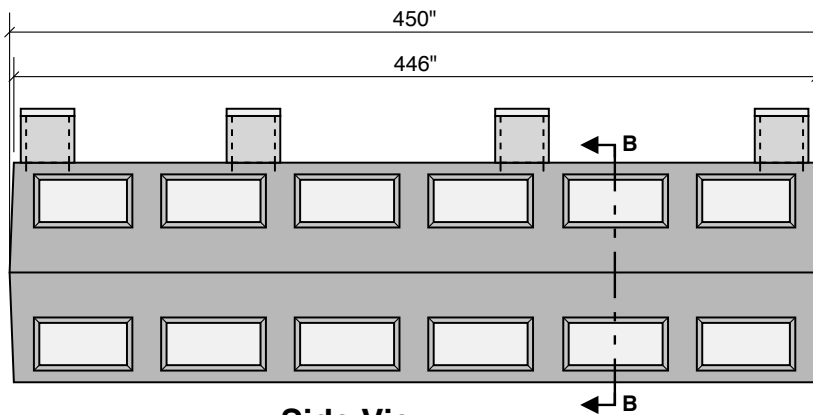
**20000 GALLON
90" LL
97" INLET**



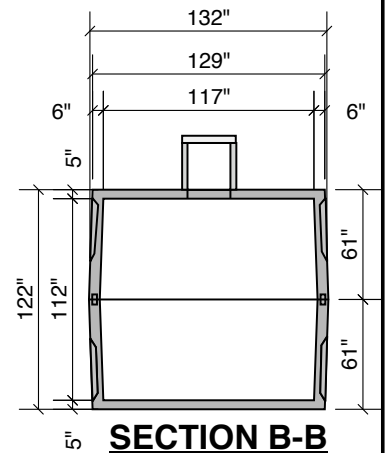
Top View



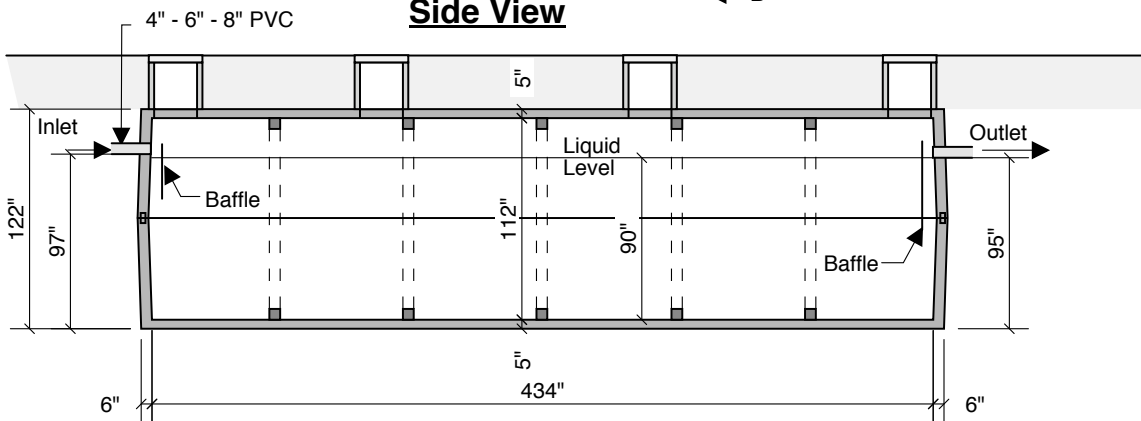
End View



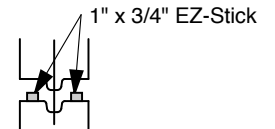
Side View



SECTION B-B



Section A-A



Typical Tongue & Groove Joint

- Notes:
 Concrete - 5000 PSI
 Joint Sealant - High Grade EZ-Stick
 Labels - Warning signs located on all manholes
 Installation - See separate installation guide
 Baffles Installed
 Rubber Gaskets - Press Seal

Septic - Pump - Holding - Recirculation Or Grease Tank

Crest Precast, Inc.		800-658-9045	
La Crescent, MN & Barneveld, WI		800-658-9045	
Scale	Drawn By: KGT	Date	Revision
Project: SEPTIC TANK 20,000 GALLON		Drawing Number	
Contractor:		MODEL 20000	