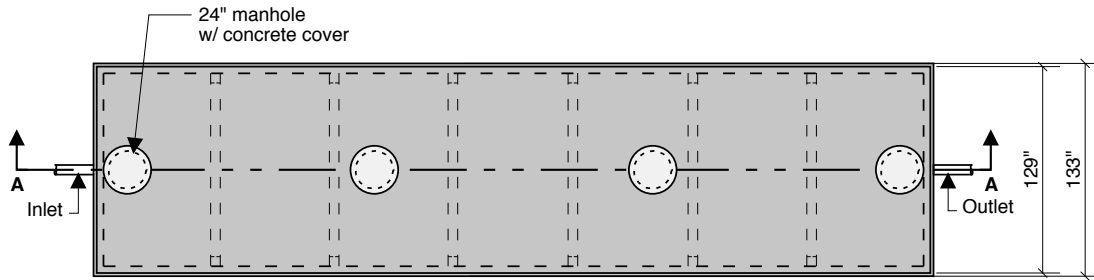
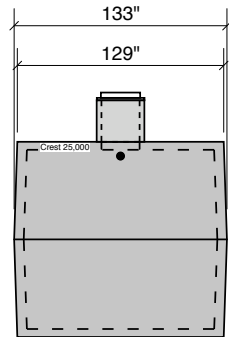


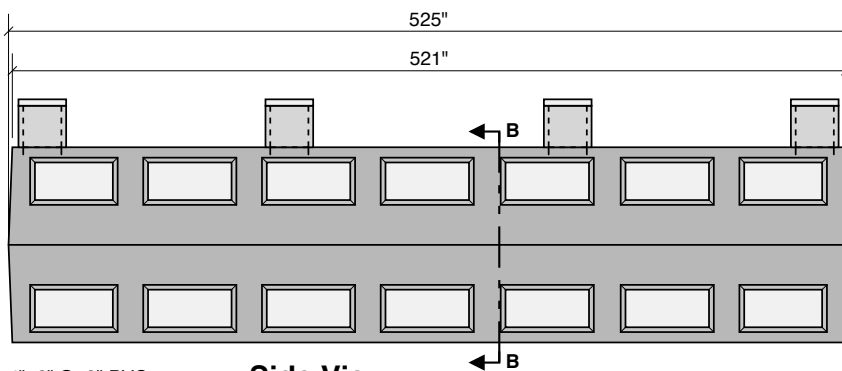
**25000 GALLON
97" LL
104" INLET**



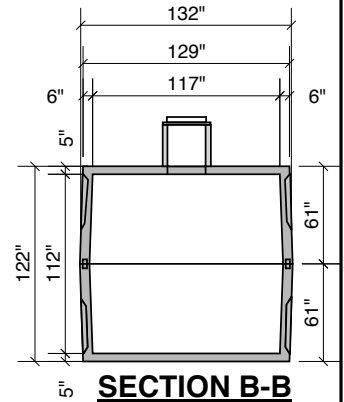
Top View



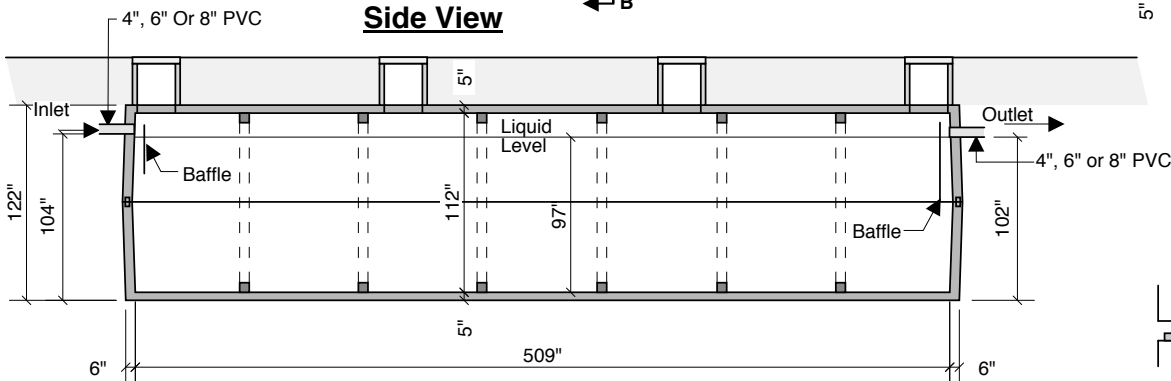
End View



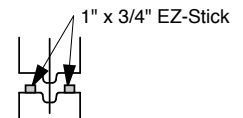
Side View



SECTION B-B



Section A-A



Typical Tongue & Groove Joint

- Notes:
 Concrete - 5000 PSI
 Joint Sealant - High Grade EZ-Stick
 Labels - Warning signs located on all manholes
 Installation - See separate installation guide
 Baffles Installed
 Rubber Gaskets - Press Seal

Septic - Pump - Holding - Recirculation Or Grease Tank

Crest Precast, Inc.
La Crescent, MN & Barneveld, WI
 800-658-9045

Scale	Drawn By: KGT
Date	Revision
Project:	SEPTIC TANK 25,000 GALLON
Contractor:	Drawing Number MODEL 25000