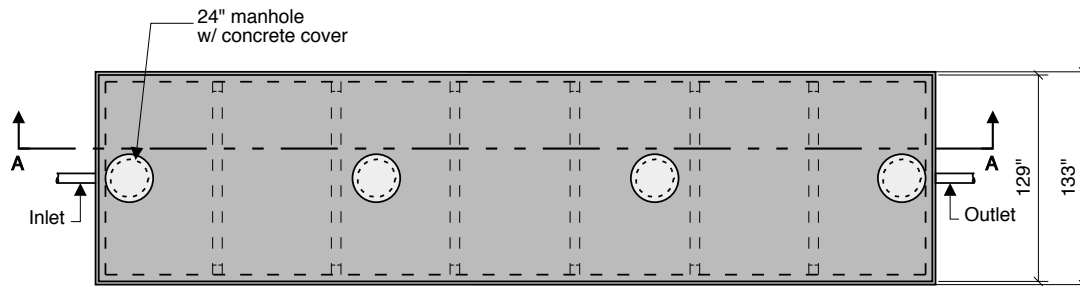
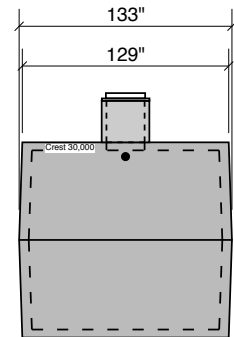


**30000 GALLON
110 1/2" LL
120 1/2" INLET**

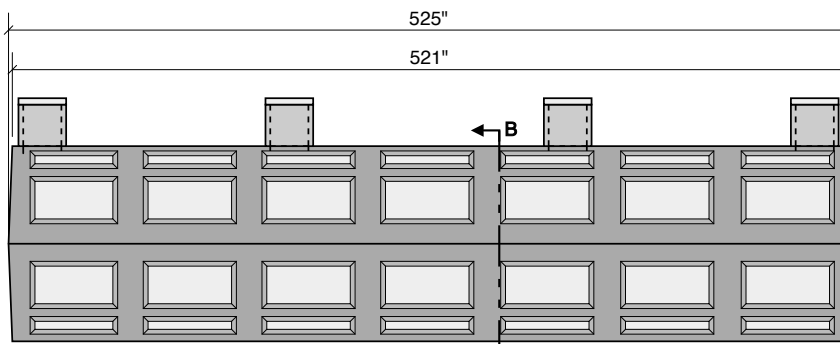
**Holding
Or Pump**



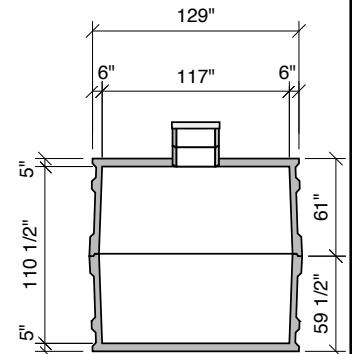
Top View



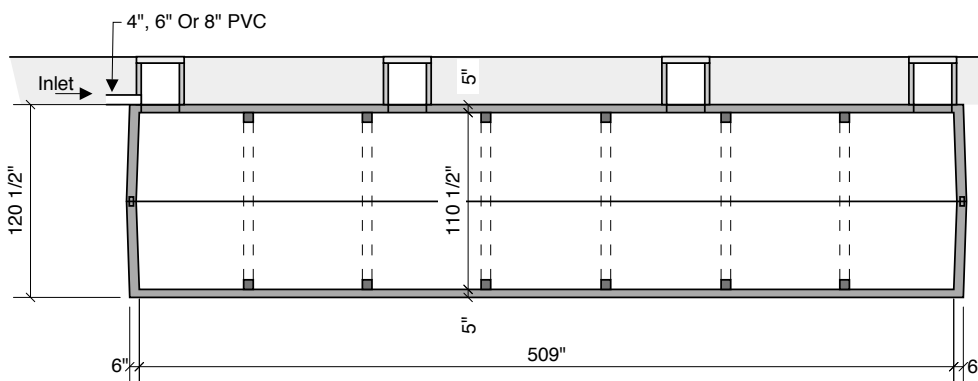
End View



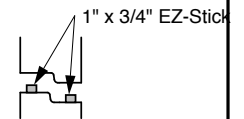
Side View



Section B-B



Section A-A



**Typical Tongue
& Groove Joint**

**Not For Use
As Septic Or
Grease Tank**

- Notes:
- Concrete - 5000 PSI
 - Joint Sealant - High Grade EZ-Stick
 - Labels - Warning signs located on all manholes
 - Installation - See separate installation guide
 - Baffles Installed
 - Rubber Gaskets - Press Seal

Crest Precast, Inc.
La Crescent, MN & Barneveld, WI
800-658-9045

Scale		Drawn By: KGT
Date		Revision
Project: 30,000 Gallon Tank - Holding/Pump		
Contractor:		Drawing Number MODEL 30000