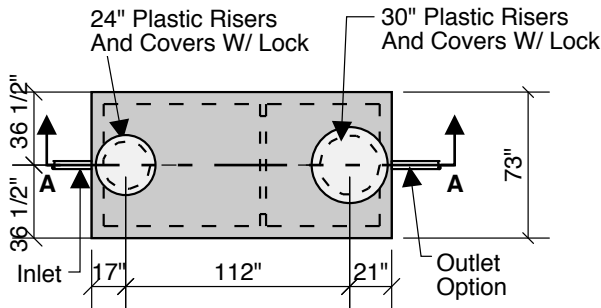


# 1600 Gallon Processing Tank

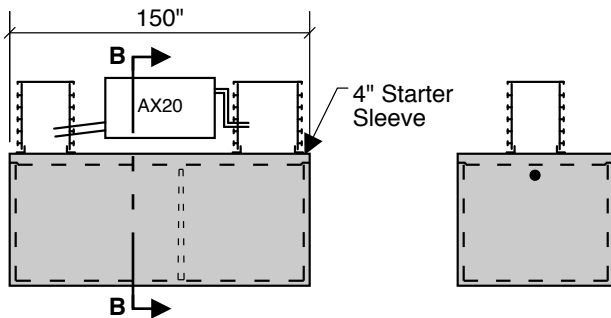
## 40" LL

## 45" INLET



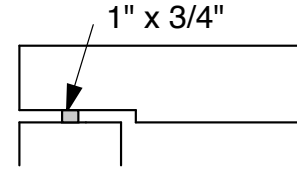
**Top View**

COMBINATION SEPTIC - PUMP  
**ADVANTEK SYSTEM**  
 AX20 - 3 To 4 Bedroom

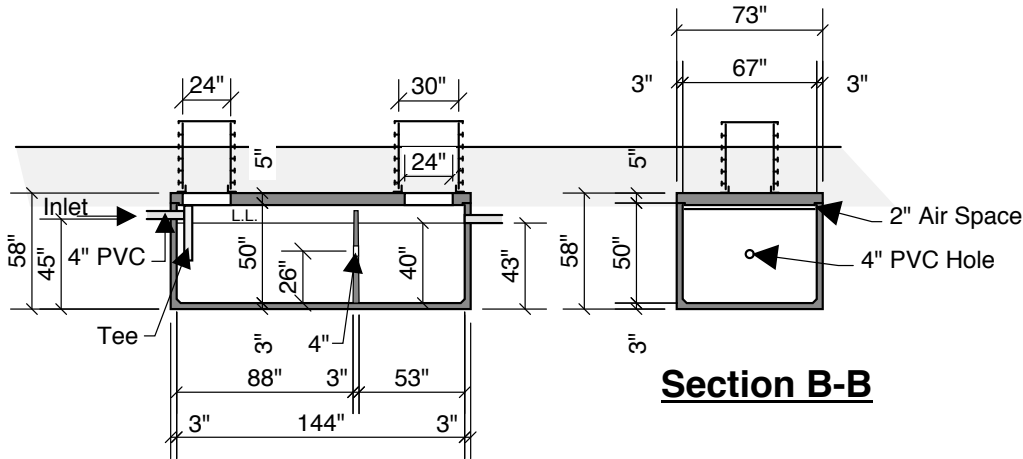


**Side View**

**End View**



**Typical Cover Detail**



**Section A-A**

**Section B-B**

**Advantes Notes:**

- Textile Filter Sits On Top Of Precast Tank
- Concrete - 5,000 PSI Water to Cement Ratio (0.35±)
- Reinforcement - Grade 60 Steel Per ACI 315 & 318  
 Complete Steel Reinforcement From Base Thru Walls & Cover
- Loading Criteria - Minimum 500 PSF On Cover  
 (Wheel Load 2,500 Lbs)  
 Minimum Lateral Loading Of 62.4 PCF  
 From Top Of Ground Surface
- Joint Sealant - High Grade EZ Stick
- Exterior Coating - Riley Bitum.
- Interior Coating - Thoro Seal
- Manhole Risers & Covers - Orenco, ADS Or Ez Riser
- Pipe Boots - Cast-a-Seal By Press Seal Company
- Testing - 24 hour Water Testing Before Shipment  
 Testing To Full Height Of Riser

**1st Chamber Size 1,020 gal**  
**2nd Chamber Size 615 gal**  
**40.875 G.P.I. in Tank**

**Crest Precast, Inc.**  
**La Crescent, MN & Barneveld, WI**

800-658-9045

Scale	Drawn By: <b>KGT</b>
Date	Revision

**Project:** Model: Advantex AX20

**Contractor:** Drawing Number