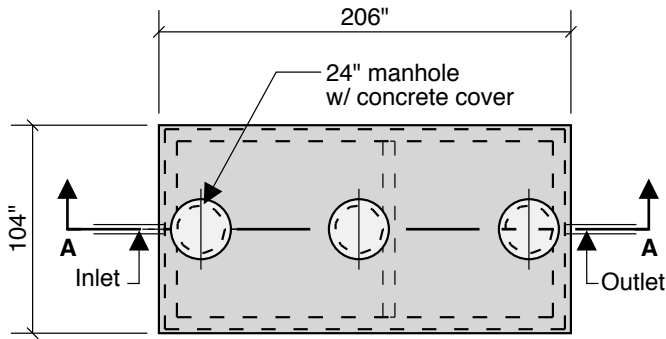
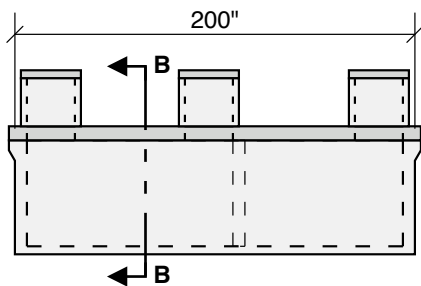


**1700 Septic 1300 Pump
44" LL
50" Inlet**

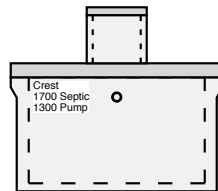
COMBINATION SEPTIC - PUMP



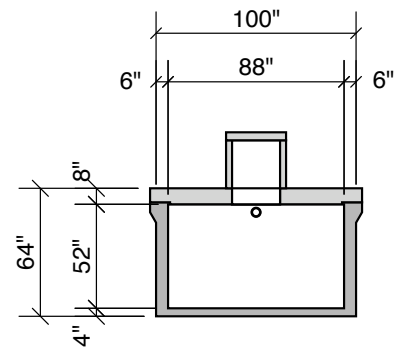
Top View



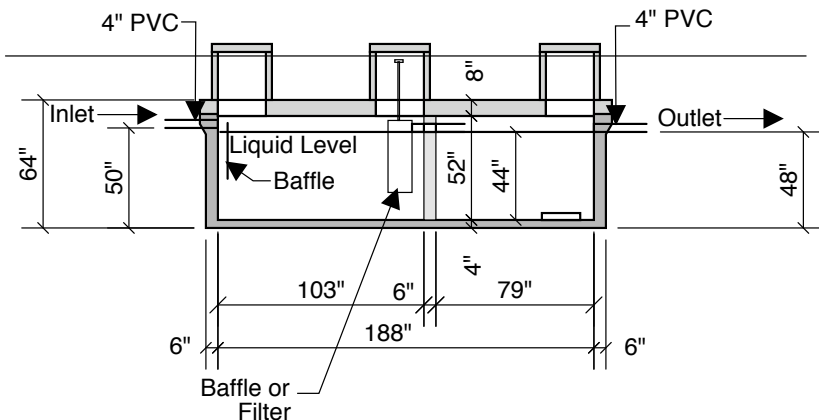
Side View



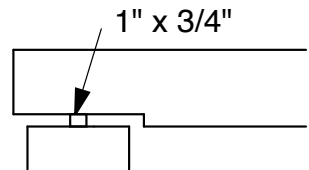
End View



Section B-B



Section A-A



Typical Cover Detail

**Septic Tank Size 1,700 gal
Pump Chamber Size 1,300 gal
30 G.P.I. In Pump Chamber**

Notes:

- Concrete - 5000 PSI
- Joint Sealant - High Grade EZ Stick
- Labels - Warning signs located on all manholes
- Installation - See separate installation guide
- Baffles Installed
- Rubber Gaskets - Press Seal
- Sealed Interior Wall

Crest Precast, Inc.

La Crescent, MN & Barneveld, WI

800-658-9045

Scale		Drawn By:	KGT
Date		Revision	
Project:		SEPTIC-PUMP TANK	
Contractor:		Drawing Number	MODEL 1700-1300-50