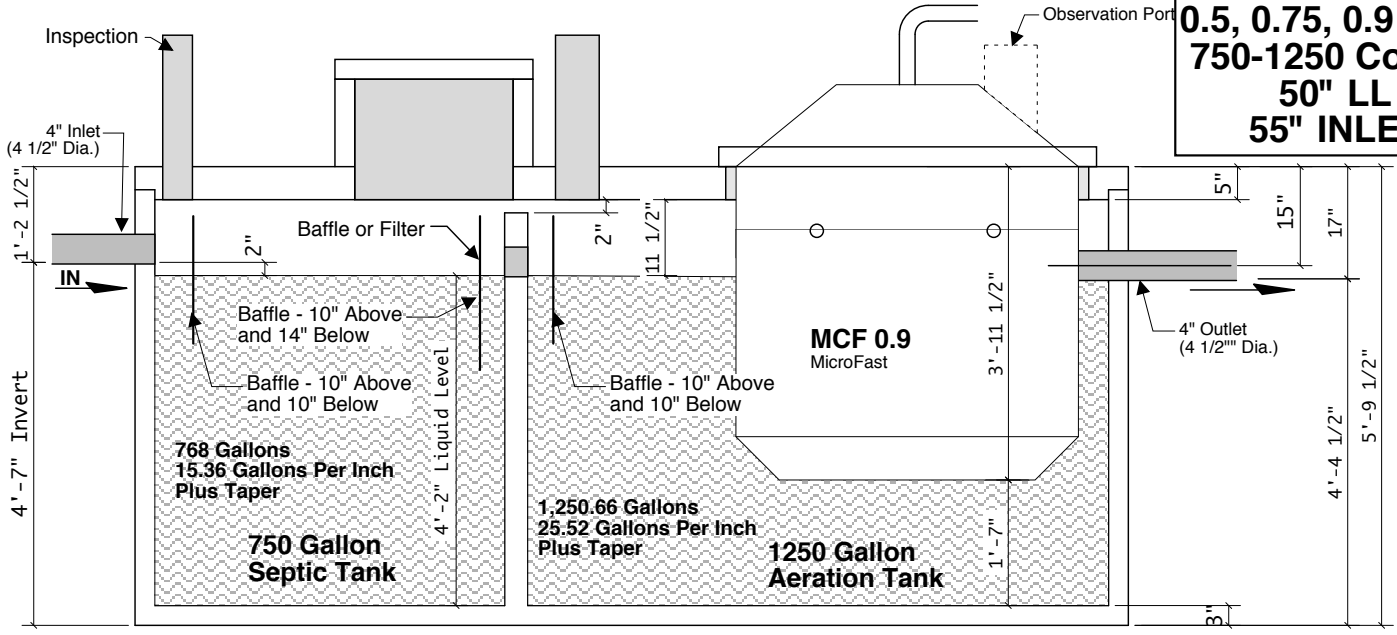
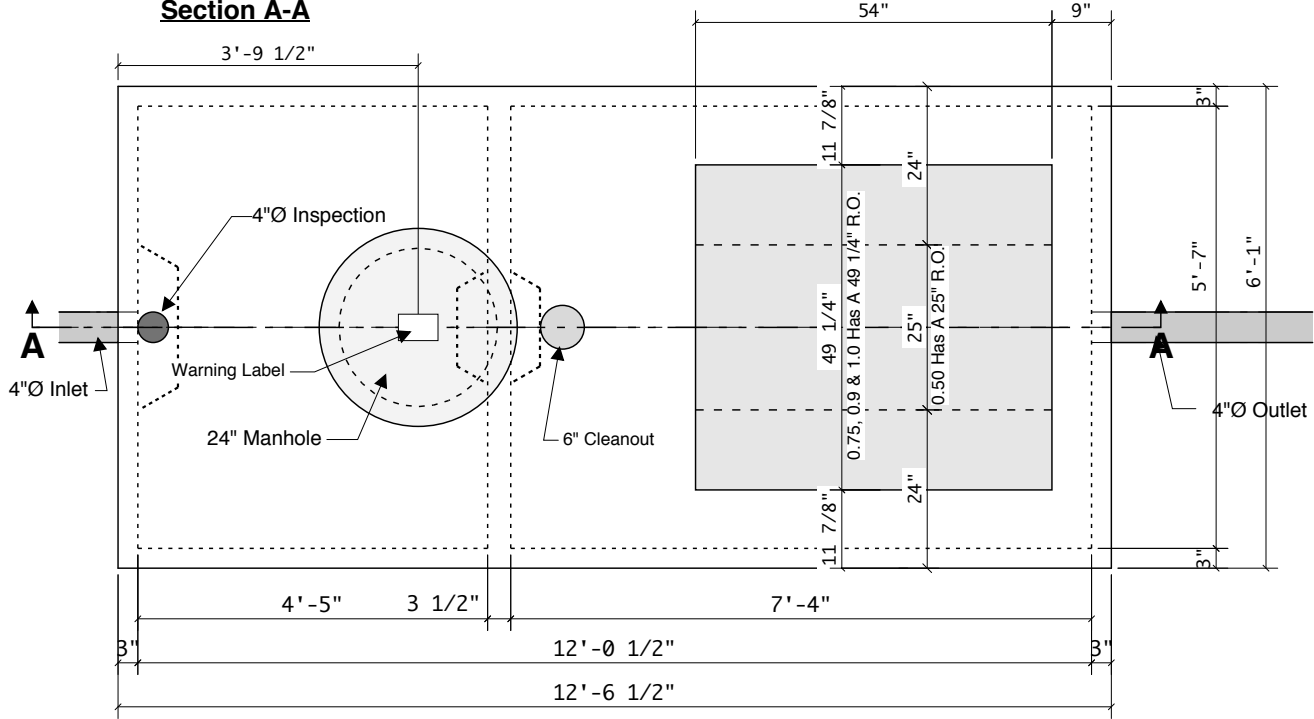


FAST Tank
0.5, 0.75, 0.9 & 1.0
750-1250 Combo
50" LL
55" INLET



Section A-A



Top View SINGLE HOME FAST 750 - 1250 COMBINATION
(For use with MCF 0.5, 0.75, 0.9 and HSF 1.0)

DESIGN NOTES

- ° TANK TO ASTM 1227
- ° W/C RATIO 0.45 OR LESS
- ° 60" MAX. BURY DEPTH OVER TOP COVER
- ° RANDOM VACUUM OR WATER TESTING BY CREST

INSTALLATION NOTES:

- ° PLUMBING CONTRACTOR TO SEAL FAST UNIT TO TANK COVER. PLUMBER OR DEALER TO PROVIDE SEMI-ANNUAL INSPECTIONS OR SERVICE.

EFFLUENT QUALITY (AVERAGE VALUE)

- ° LESS THAN 10 MG/L B.O.D.
- ° LESS THAN 10 MG/L S.S.
- ° LESS THAN 10 MG/L PHOSPHORUS

APPLIED REFERENCE NO.
 001, 002, 003, 004, 005, 07B, 008, 009, 012, 014, 017, 018, 019, 020, 021, 022, 022A, 022B, 023

NOTES:

- ° COMBINATION 750/1250 TANK FOR BIO-MICROBICS FAST WORKS WITH THE FOLLOWING UNITS
- ° MICRO FAST 0.5 - 500 GPD, RESIDENTIAL
- ° MICRO FAST 0.75 - 750 GPD, RESIDENTIAL
- ° MICRO FAST 0.9 - 900 GPD, RESIDENTIAL
- ° HIGH STRENGTH FAST 1.0 - 1250 GPD, COMMERCIAL

SPECIFICATIONS

- ° CONCRETE - 5,000 PSI
- ° REINFORCE 6" OCEW
- ° MASTIC EZ-STICK
- ° RUBBER BOOTS @ INLET & OUTLET - PRESS SEAL BRAND
- ° SEAL AND ATTACH FAST INSERT TO PRECAST TANK PER MFG. INSTRUCTIONS

Crest Precast, Inc.
La Crescent, MN & Barneveld, WI
 800-658-9045

Scale:	Drawn By: KGT
Date:	Revision:
Project: Bio-Microbics F.A.S.T. MCF 0.5, 0.75, 0.9 & 1.0	
Contractor:	MODEL 750-1250-FAST