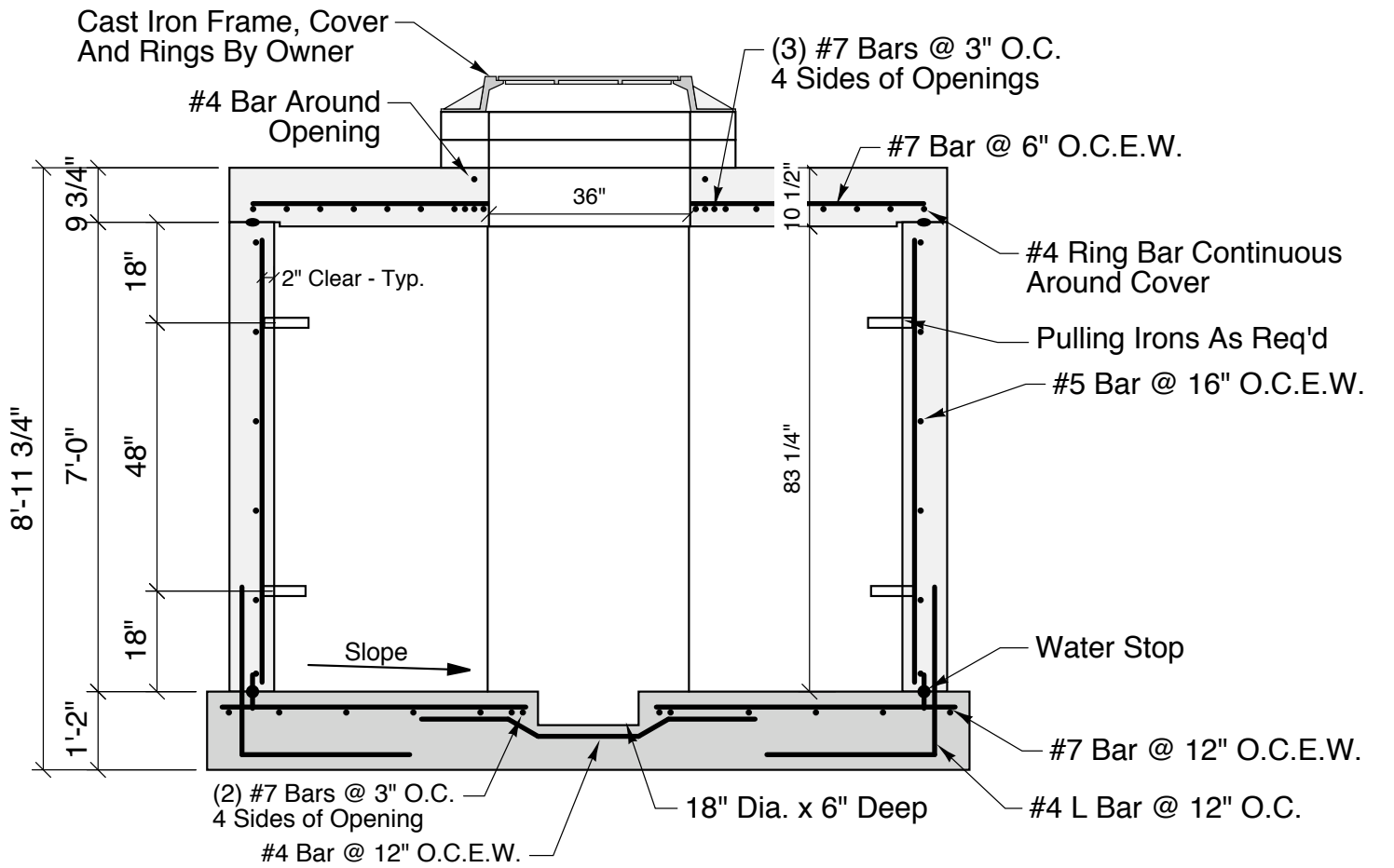


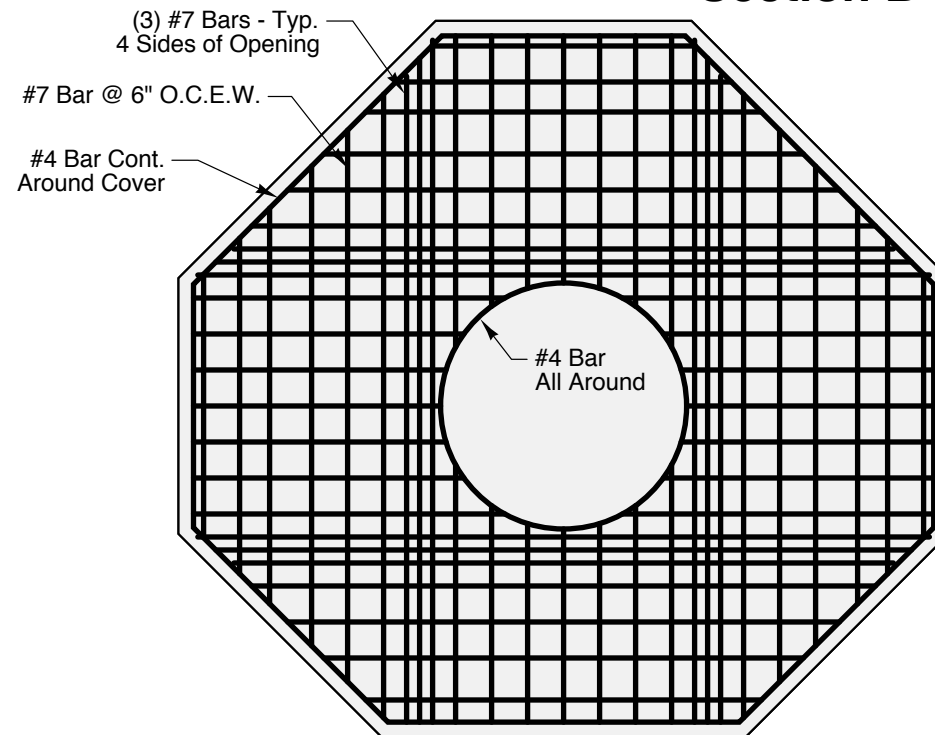
**Top View**

# 3 Way Manhole

8'-7 3/8" x 9'-4 3/8" x 7'-0" Deep



**Section B-B**



**Cover Reinforcement**

**General Notes:**

- Concrete - 5,000 PSI
- HS20 Wheel Load Design
- Pulling irons by Penn Insert
- Joint Sealer - EZ-Stick (1" Dia.)
- Covers to be marked - "ELECTRIC" By Others
- Weights
  - Base & Walls - 40,000
  - Cover - 10,600
- Reinforcement - Grade 60 Rebar Or WWF Equiv. No Welding Allowed

<b>Crest Precast, Inc.</b>		Drawn By: <b>KGT</b>	
<b>La Crescent, MN &amp; Barneveld, WI</b>		Revision	
800-658-9045		Date	
Project: <b>Standard 3 Way Precast Manhole</b>		Drawing Number	
Contractor:		<b>1</b>	