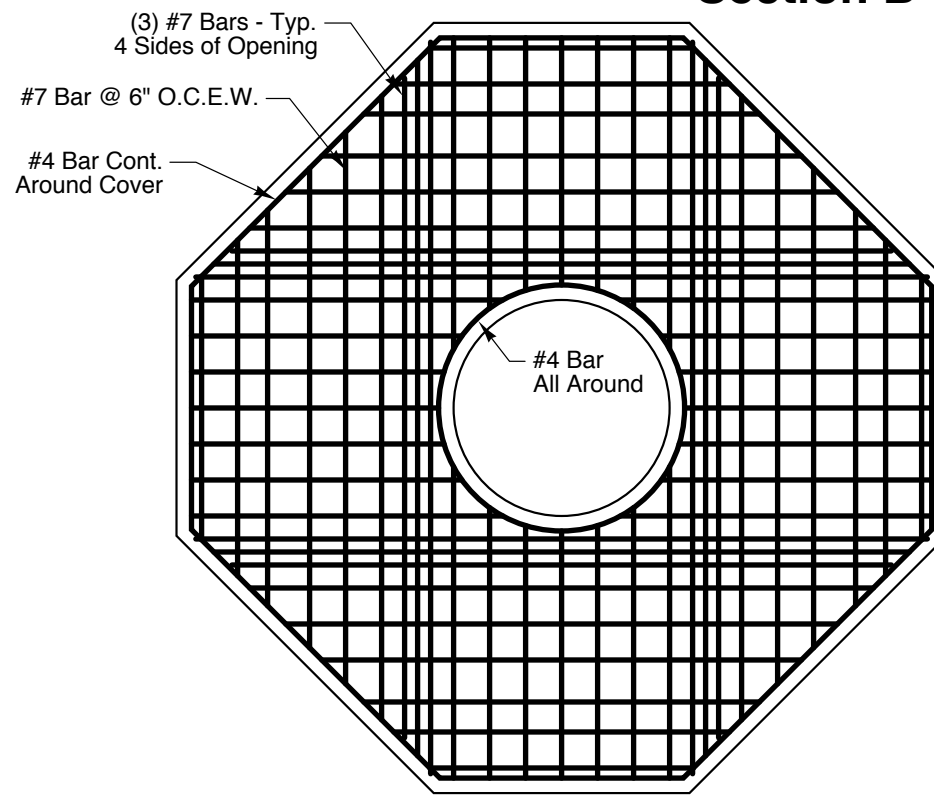


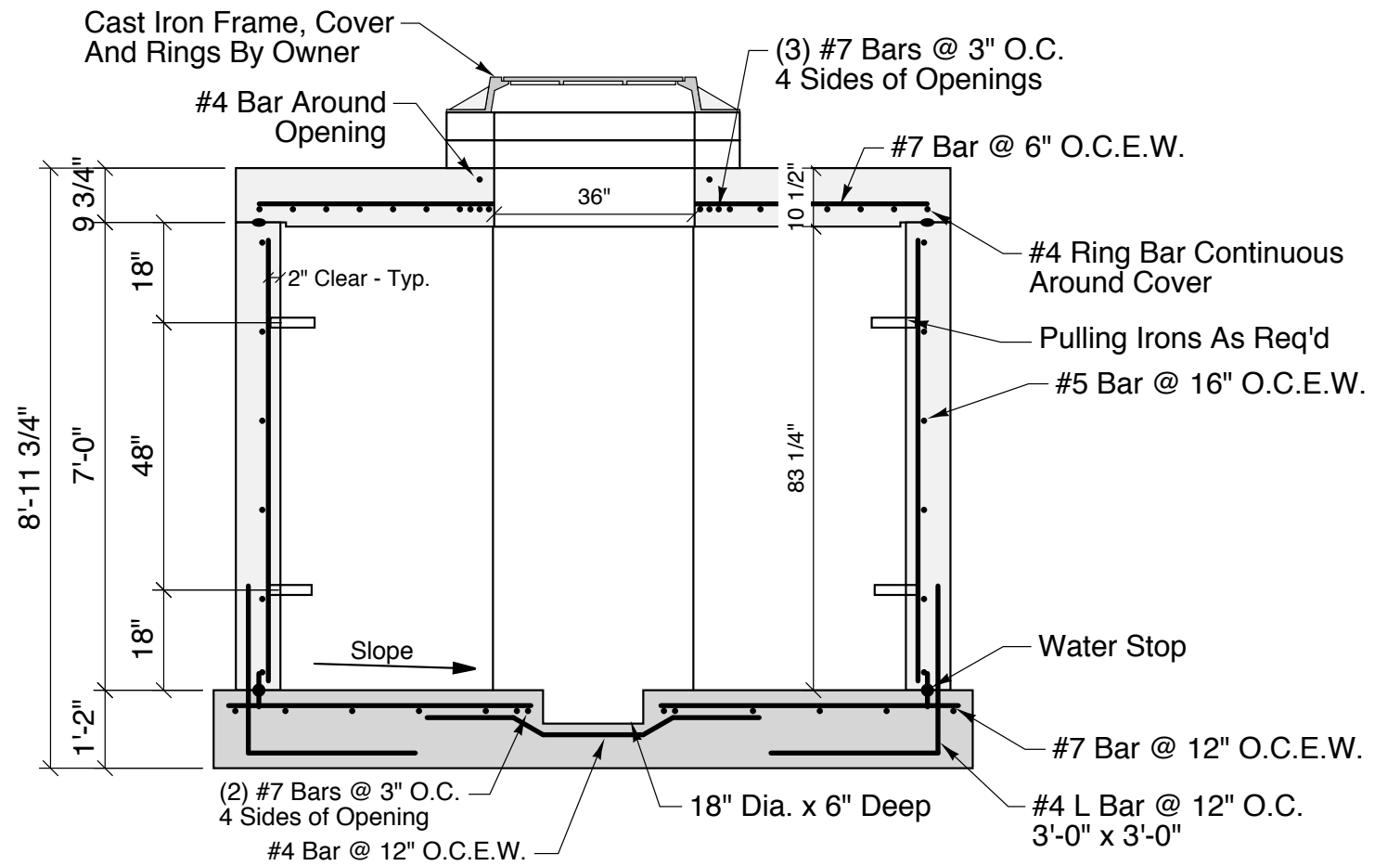
**Top View**

# 4 Way Manhole

9'-4 3/8" x 9'-4 3/8" x 7'-0" Deep



**Cover Reinforcement**



**Section B-B**

**General Notes:**

- Concrete - 5,000 PSI
- HS20 Wheel Load Design
- Pulling irons by Penn Insert
- Joint Sealer - EZ-Stick (1" Dia.)
- Covers to be marked - "ELECTRIC" By Others
- Weights
  - Base & Walls - 40,000
  - Cover - 10,600
- Reinforcement - Grade 60 Rebar Or WWF Equiv. No Welding Allowed

**Crest Precast, Inc.**  
 La Crescent, MN & Barneveld, WI  
 800-658-9045

Scale	Drawn By: <b>KGT</b>
Date	Revision
Project: <b>Standard 4 Way Precast Manhole</b>	
Contractor:	Drawing Number: <b>1</b>