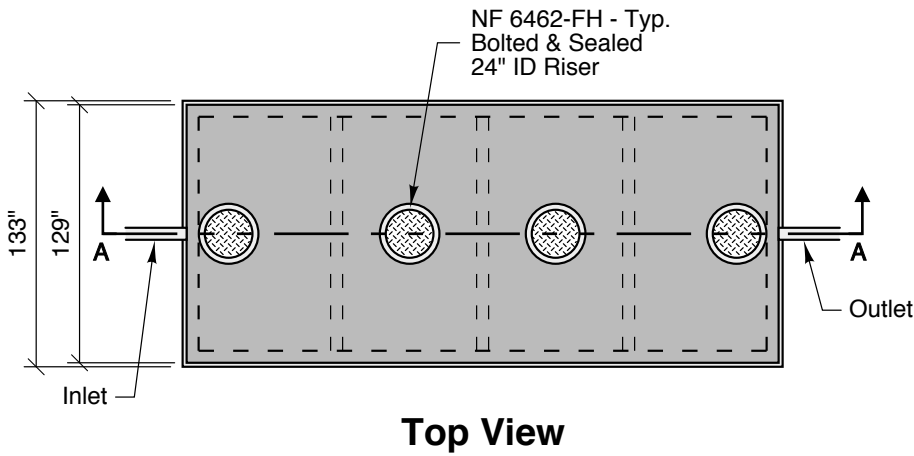
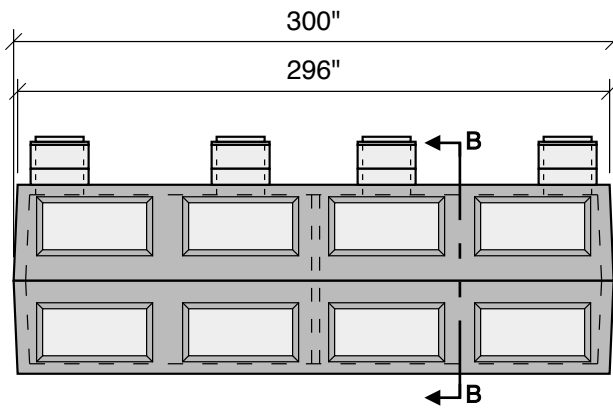


**10000 GALLON
GREASE
73" LL
80" INLET**

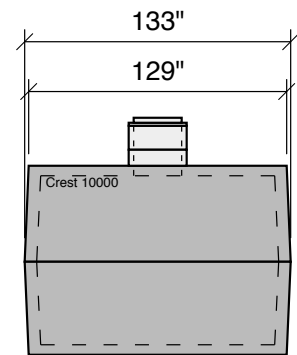
2 Compartment



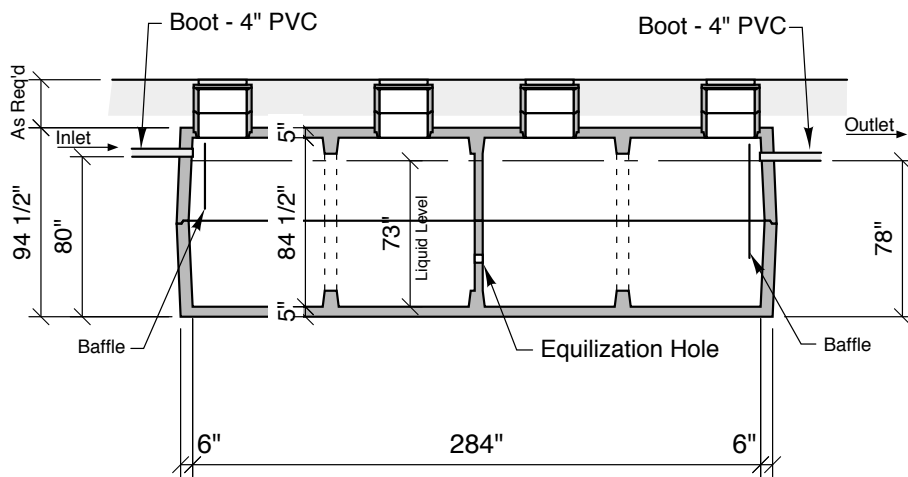
Top View



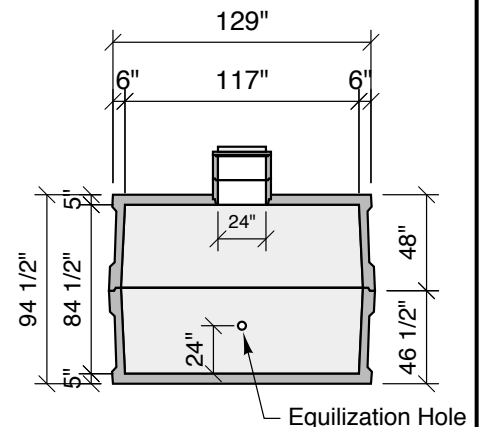
Side View



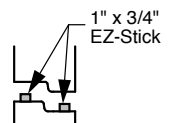
End View



Section A-A



Section B-B



Typical Tank Joint

Notes:
 Concrete - 6000 PSI w/ Crystalline Water Proofing Admixture
 Joint Sealant - High Grade EZ-Stick
 Labels - Warning signs located on all manholes
 Installation - See separate installation guide
 Baffles Installed
 Rubber Gaskets - Press Seal
 Tank Designed To ASTM C-1227-10 and ASTM 1613-10

Crest Precast, Inc.
La Crescent, MN & Barneveld, WI
 800-658-9045

Scale		Drawn By:	KGJ
Date	5-1-08	Revision	
Project:	10,000 Gal. Grease Interceptor		
Contractor:	Drawing Number MODEL 10000-G-2		