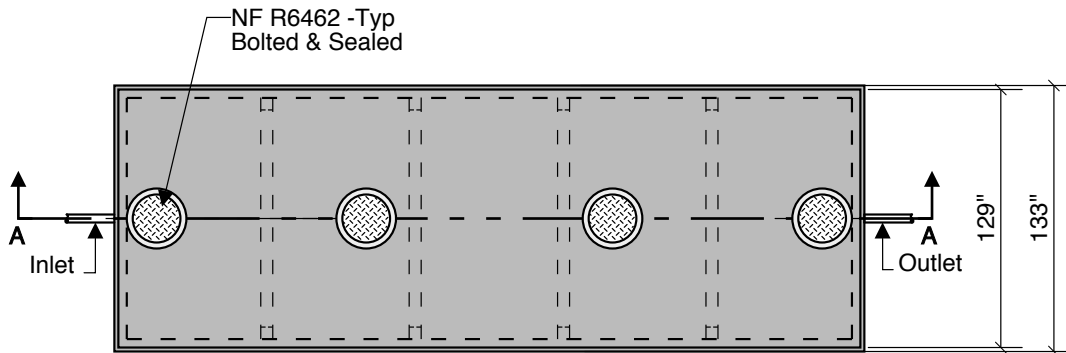
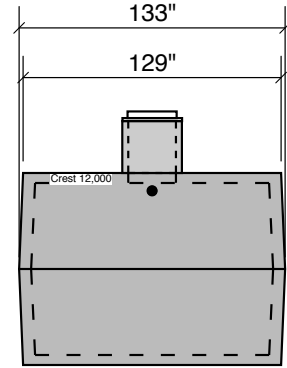


**12000 GALLON
GREASE
73" LL
80" INLET**

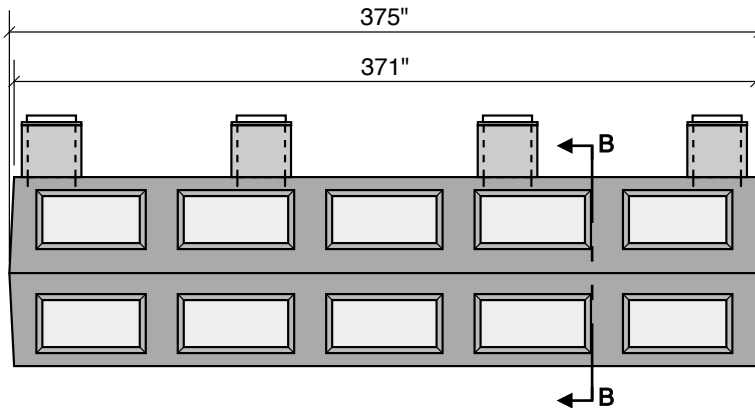
Two Compartment



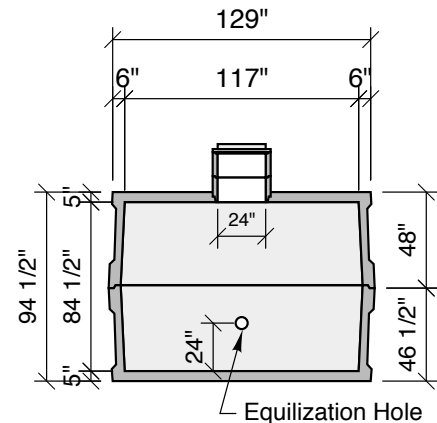
Top View



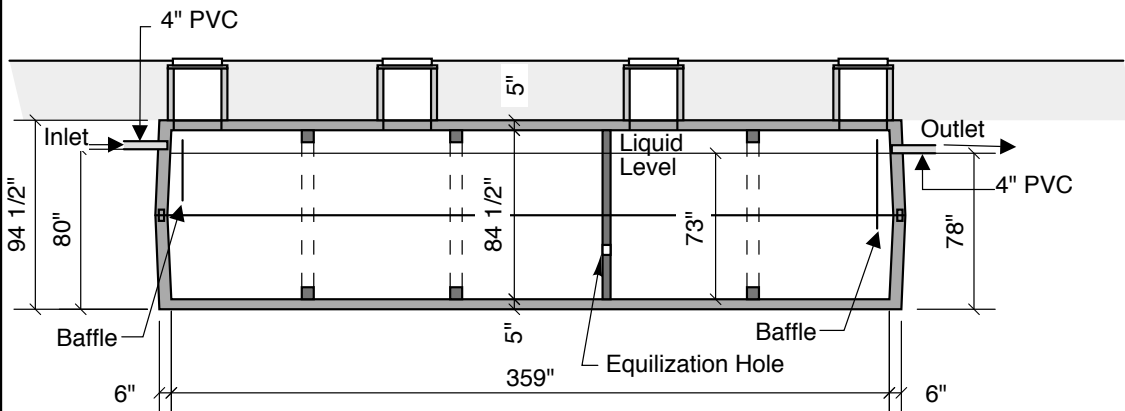
End View



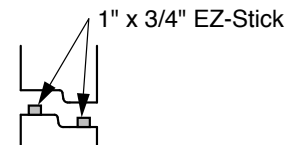
Side View



Section B-B



Section A-A



Typical Tongue & Groove Joint

- Notes:
- Concrete - 5000 PSI
 - Joint Sealant - High Grade EZ-Stick
 - Labels - Warning signs located on all manholes
 - Installation - See separate installation guide
 - Baffles Installed
 - Rubber Gaskets - Press Seal
 - Tank Designed To ASTM C-1227-10 and ASTM 1613-10

Crest Precast, Inc.
La Crescent, MN & Barneveld, WI
800-658-9045

Scale		Drawn By:	KGT
Date	5-1-08	Revision	
Project:	12,000 Gal. Grease Interceptor		
Contractor:	Drawing Number: MODEL 12000-G-2		