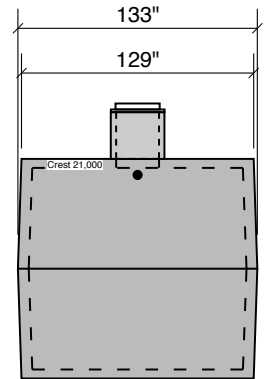
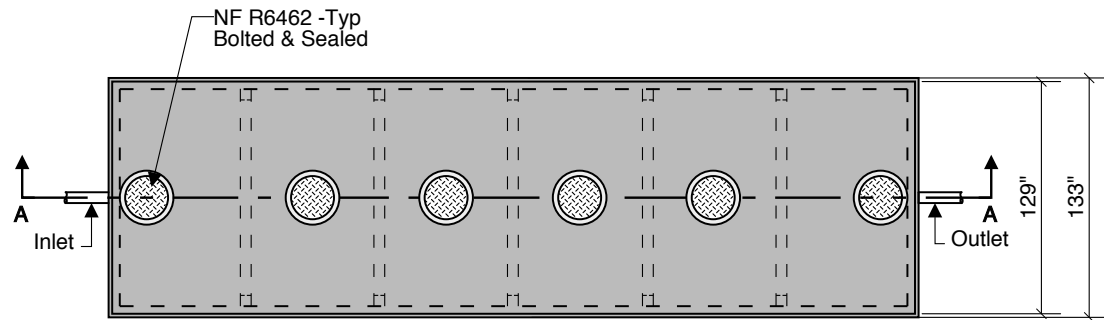


**21000 GALLON  
GREASE  
97" LL  
104" INLET**

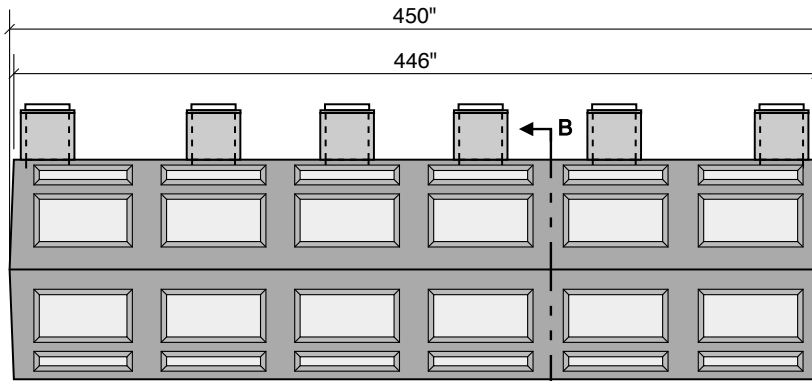
2 Compartment



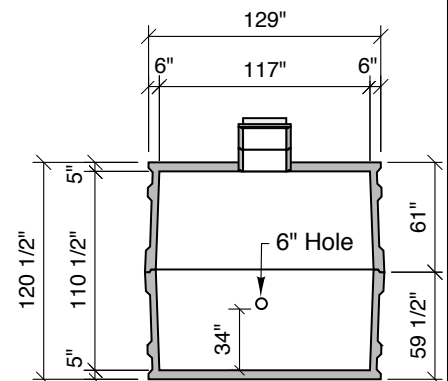
**End View**



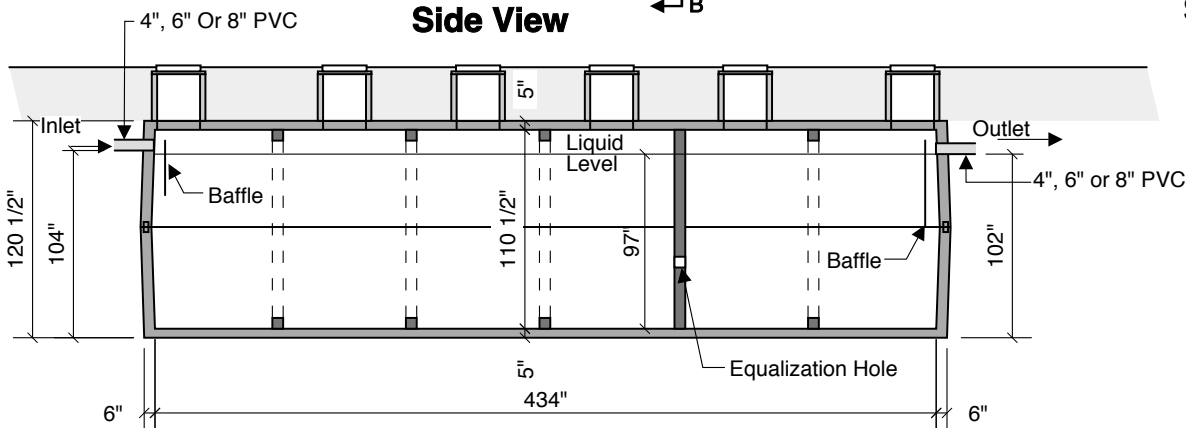
**Top View**



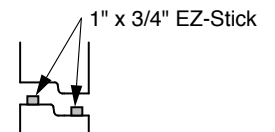
**Side View**



**Section B-B**



**Section A-A**



**Typical Tongue & Groove Joint**

- Notes:  
 Concrete - 5000 PSI  
 Joint Sealant - High Grade EZ-Stick  
 Labels - Warning signs located on all manholes  
 Installation - See separate installation guide  
 Baffles Installed  
 Rubber Gaskets - Press Seal  
 Tank Designed To ASTM C-1227-10 and ASTM 1613-10

**Crest Precast, Inc.**  
**La Crescent, MN & Barneveld, WI**  
 800-658-9045

|             |                                       |           |     |
|-------------|---------------------------------------|-----------|-----|
| Scale       |                                       | Drawn By: | KGT |
| Date        | 5-1-08                                | Revision  |     |
| Project:    | <b>21,000 Gal. Grease Interceptor</b> |           |     |
| Contractor: | Drawing Number <b>21000-G-2</b>       |           |     |