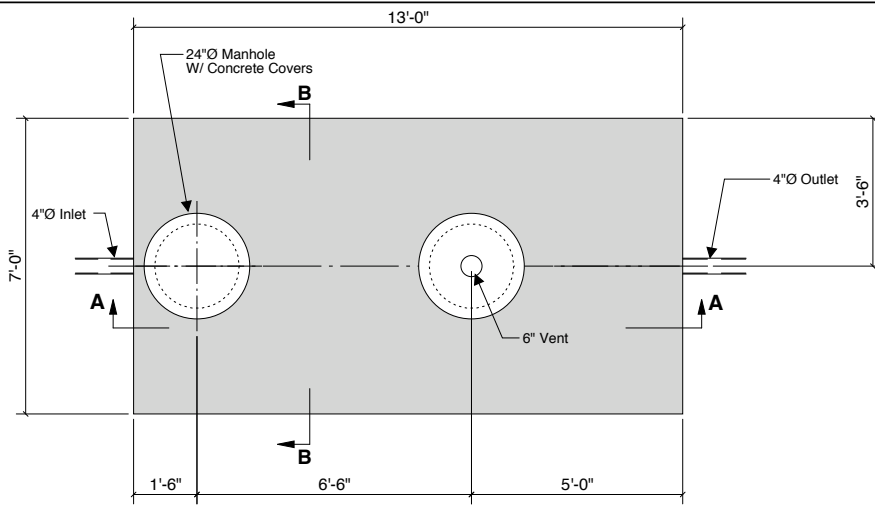
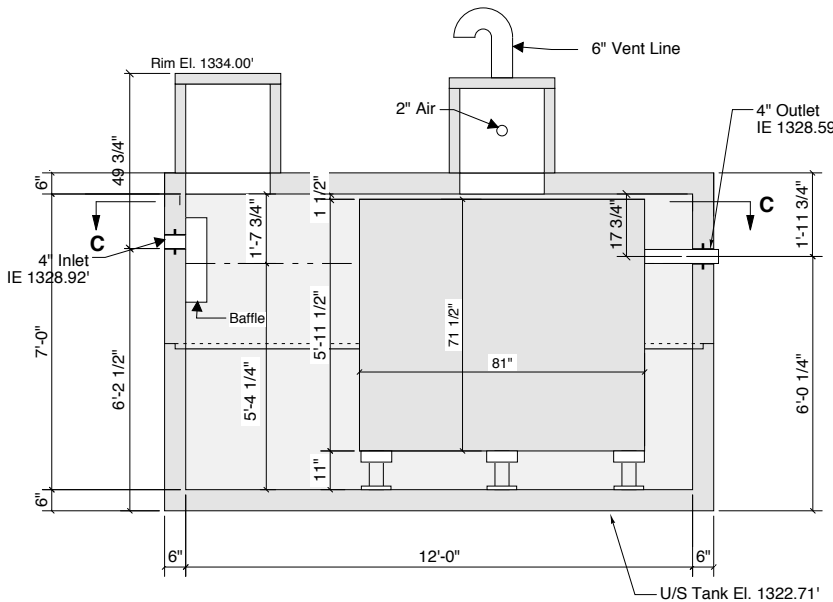


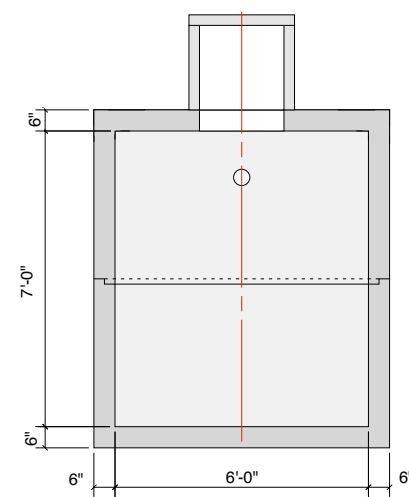
MICRO-FAST 3.0 3200 Tank



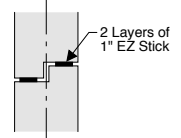
Plan View - Top Panel



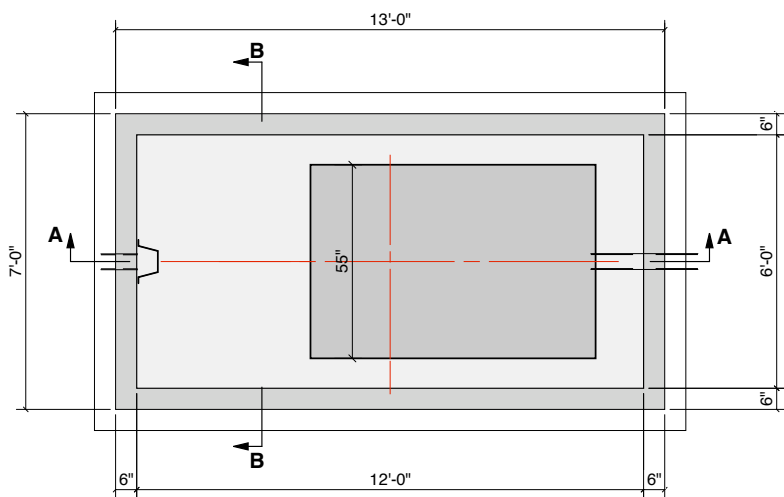
Section A-A



Section B-B



Typical Joint



**Section C-C
Sectional Plan**

DESIGN NOTES

- W/C RATIO 0.45 OR LESS
- 60" MAX. BURY DEPTH OVER TOP COVER
- RANDOM VACUUM OR WATER TESTING BY CREST

INSTALLATION NOTES:

- PLUMBING CONTRACTOR TO SEAL FAST UNIT TO TANK COVER. PLUMBER OR DEALER TO PROVIDE SEMI-ANNUAL INSPECTIONS OR SERVICE.
- Follow CREST bedding and backfill instructions.

EFFLUENT EQUALITY (AVERAGE VALUE)

- LESS THAN 10 MG/L B.O.D.
- LESS THAN 10 MG/L S.S.
- LESS THAN 10 MG/L PHOSPHORUS

- SPECIFICATIONS
- CONCRETE - 5,000 PSI
- REINFORCE 6" OCEW
- MASTIC EZ STICK
- RUBBER BOOTS @ INLET & OUTLET - PRESS SEAL OR A-LOK BRAND
- SEAL AND ATTACH FAST INSERT TO PRECAST TANK PER MFG. INSTRUCTIONS
- INLETS & OUTLETS CAN BE 4" OR 6" DIA.

Crest Precast, Inc.
La Crescent, MN & Barneveld, WI
 800-658-9045

Scale:	Drawn By: KGT
Date:	Revision:
Project:	Bio-Microbics F.A.S.T. - MCF 3.0
Contractor:	Drawing Number: MODEL 3200-3.0